

Product show

ZXC [China PVC Roofing Manufacturers](#) Custom Modern Fireproof Design PVC Roofing Materials

| | |
|------------------------|--|
| 产品名称 | PVC anti-corrosion plastic roof sheet |
| 品牌 | ZXC |
| 产地 | Foshan city,Guangdong province,China(Mainland) |
| 材料 | Polyvinyl chloride,Calcium powder,other chemical materials |
| 厚度 | 10 mm |
| Certification | ISO9001 / SGS / CE |
| Minimum Order Quantity | 300 square meter |
| Delivery Time | 1x20GP for 6 days,1x40GP for 7 days |
| Supply Ability | We have 8 produce lines,about 13500 square meter every day |
| 付款方式 | T/T , firstly pay 30% deposit,before loading container pay rest of payment L/C , |
| 物流服务 | Full Container Load (FCL) Service,We do it by myself. Less than Container Load (LCL) Service,We find our agents to do it. |
| 包装 | Pallet or PE bag |
| 交货地点 | Guangzhou / Shenzhen / Foshan |
| 适用场所 | Factory,Warehouse,Farm,Market,Aisle.Especially in corrosive chemical plants, smelters, ceramic plants, soy sauce factory, chemical plants, printing and dyeing plant, organic solvent factory, acid, alkali and other corrosive plant |



Carrying capacity



Flame retardant



Not Conduct Electricity



Corrosion Resistance



White



Green



Blue



Yellow

More Types

1130 corrugaetd sheets



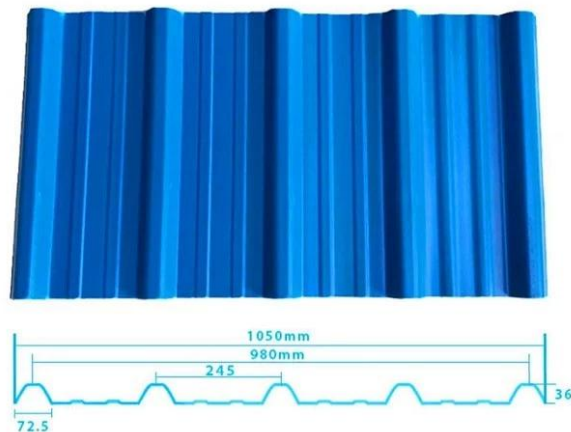
1130 trapezoidal sheets



900 high wave



980 high wave



| | |
|-----------------|---|
| Model Number | #1130-210-24 |
| □□□□ | Trapezoid type |
| Overall Width | 1130mm |
| Effective Width | 1050mm |
| □□□□□□ | 1.3mm / 1.5mm / 1.8mm / 2.0mm / 2.3mm / 2.5mm / 2.8mm / 3.0mm |
| □□□□□□ | 5.8meter / 11.8meter / Customized |
| □□ | White / Blue / Green / Red / Customized |
| Wave Spacing | 210mm |
| Wave Height | 24mm |
| □□□□ | One layer / Two layers / Three layers |

□□□□□□□□

• **Anti-corrosion**

• ZhongXingCheng PVC plastic roofing sheet in the long term against acid, alkali, salt and other corrosive chemicals. Experiments prove that: In the salt, alkali and 60% following a 24-hour soaking in acid, no chemical reaction. Very suitable for acid rainprone areas and coastal use, the effect was particularly significant.

• □□□□□□

• ZhongXingCheng PVC plastic roofing sheet's surface materials is co-extruded in ultra-weather surface layer resin to ensure the durability of products (for 15 years in quality assurance).

• **Fire Resistance**

• ZhongXingCheng PVC plastic roofing sheet is a flame retardant materials, through the national fire authority of the department according to GB8624-2006 standards for testing, fire safety performance ≥ B1 grade.

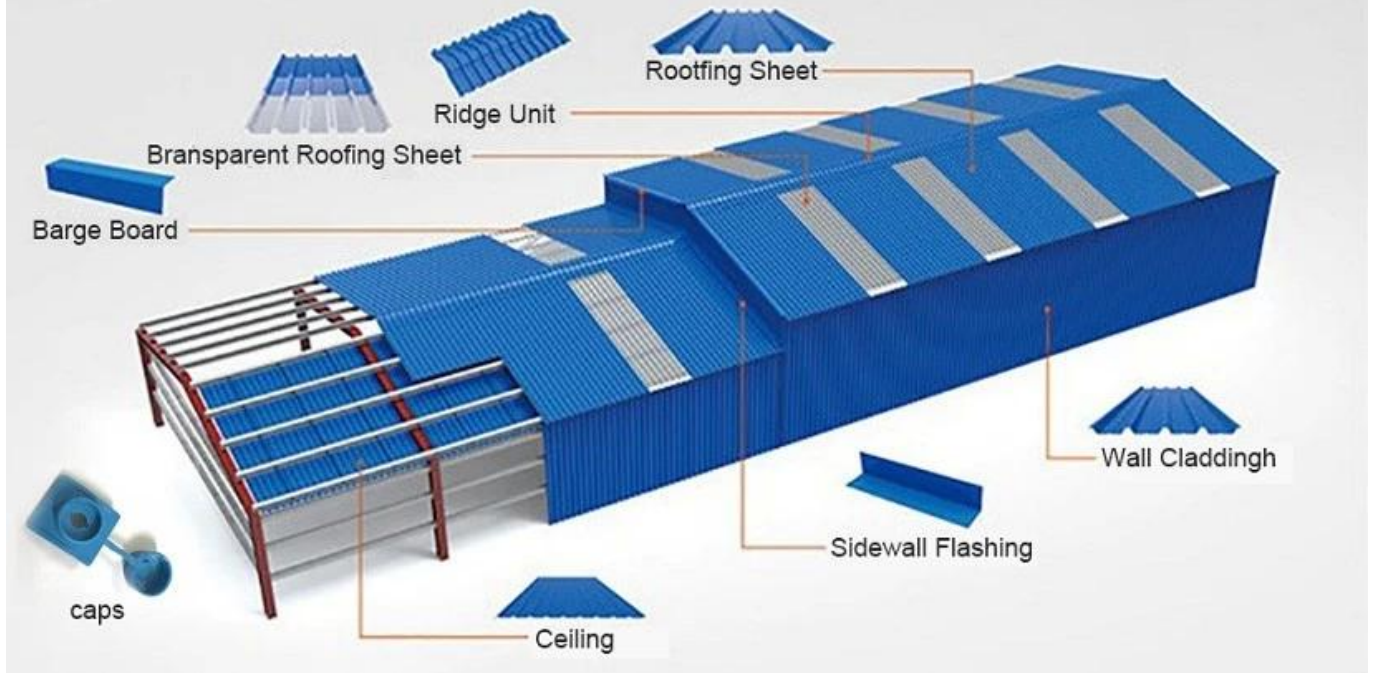
• **Heat Insulation**

• ZhongXingCheng PVC plastic roofing sheet's thermal conductivity coefficient is 0.325w/mk, clay tile is about 1 / 310, cement tile 1 / 5, 0.5mm thick color steel tile 1 / 2000. Therefore, without considering the case of insulation layer increases, the PVC plastic roofing sheet can still achieve the best thermal insulation properties.

• **Sound Insulation**

• The tests prove that: in suffering heavy rain, high winds the impact of outside noise, ZhongXingCheng ([Plastic PVC Roofing Sheet Factory](#)) roofing sheet has a good absorption of the noise effect, noise down 30dB than color steel tile.

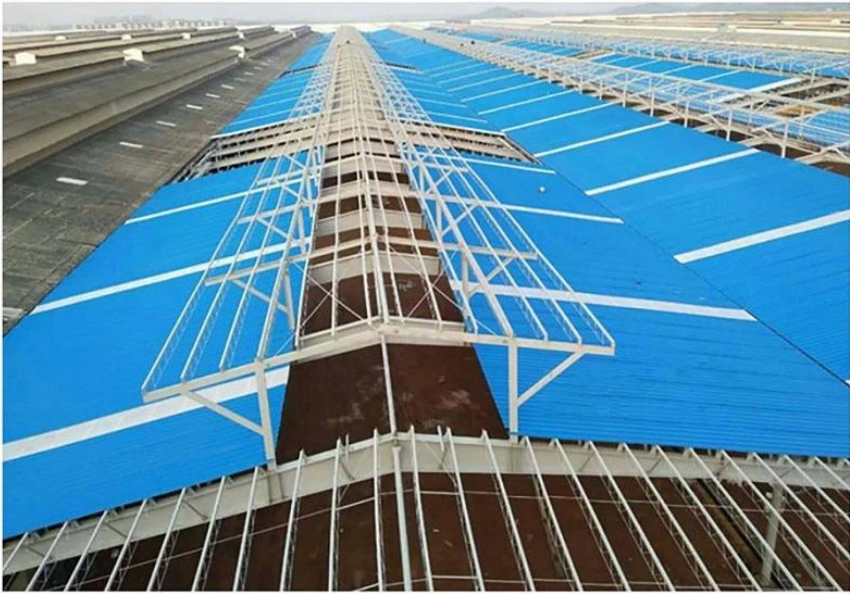
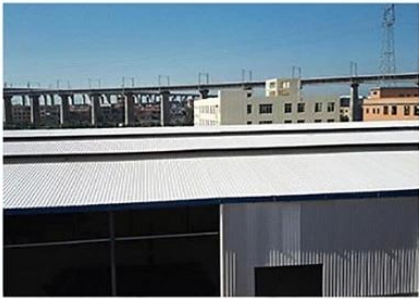
PVC accessories



Our Factory



Engineering case



Certificate

检验报告
Test Report

佛山市质量监督检测中心
Foshan Supervision Testing Centre of Quality and Metrology

Foshan Supervision Testing Centre of Quality and Metrology
Test Report

| No. | Item | Unit | Requirement | Result | Remark |
|-----|---|-------|--|-----------|--------|
| 1 | Appearance | --- | The color of tile should be uniform. There should be no bubble, crack or visible impurities on the surface. Edge of the tile should be clean without dirt. Warpage should be less, and tolerance on warpage. | Confirmed | Pass |
| 2 | Walk distance | mm | ≤ 10 | 8 | Pass |
| 3 | Thickness deviation | mm | ± 0.2 | 0.02 | Pass |
| 4 | Slip-resistance | 1/100 | --- | 1700 | --- |
| 5 | Impact strength | MPa | ≥ 2.0 | 3.0 | Pass |
| 6 | Flexural strength | % | ≥ 2.0 | 3.0 | Pass |
| 7 | Water absorption (1h, 3h, 7d) | --- | No significant cracks or water absorption | Confirmed | Pass |
| 8 | Acid resistance (3%, 5%, 10%, 20%, 30%, 40%, 50%, 60%, 70%, 80%, 90%, 95%, 98%, 100%) | --- | No obvious color change or delamination phenomenon | Confirmed | Pass |
| 9 | Alkali resistance (5%, 10%, 20%, 30%, 40%, 50%, 60%, 70%, 80%, 90%, 95%, 98%, 100%) | --- | No obvious color change or delamination phenomenon | Confirmed | Pass |
| 10 | Surface roughness (Ra) | mm | ≤ 1.0 | 0.2 | Pass |
| 11 | Change index | % | ≤ 0.1 | 0.05 | Pass |

Foshan Supervision Testing Centre of Quality and Metrology
Test Report

| No. | Item | Unit | Requirement | Result | Remark |
|-----|---|-------|--|-----------|--------|
| 1 | Appearance | --- | The surface should be smooth with uniform coloration and no visible crack, hole, scratch, bubble, or other defect, color difference. | Confirmed | Pass |
| 2 | Surface layer thickness | mm | ≥ 0.17 | 0.18 | Pass |
| 3 | Tensile strength | MPa | ≥ 2.0 | 2.0 | Pass |
| 4 | Flexural strength | % | ≥ 2.0 | 3.0 | Pass |
| 5 | Impact strength | MPa | ≥ 2.0 | 3.0 | Pass |
| 6 | Flexural strength | % | ≥ 2.0 | 3.0 | Pass |
| 7 | Slip-resistance | 1/100 | --- | 1700 | --- |
| 8 | Water absorption (1h, 3h, 7d) | --- | No significant cracks or water absorption | Confirmed | Pass |
| 9 | Acid resistance (3%, 5%, 10%, 20%, 30%, 40%, 50%, 60%, 70%, 80%, 90%, 95%, 98%, 100%) | --- | No obvious color change or delamination phenomenon | Confirmed | Pass |
| 10 | Alkali resistance (5%, 10%, 20%, 30%, 40%, 50%, 60%, 70%, 80%, 90%, 95%, 98%, 100%) | --- | No obvious color change or delamination phenomenon | Confirmed | Pass |
| 11 | Surface roughness (Ra) | mm | ≤ 1.0 | 0.2 | Pass |
| 12 | Change index | % | ≤ 0.1 | 0.05 | Pass |

质量管理体系认证证书
Quality Management System Certificate

佛山市南海区众兴塑料制品有限公司
Foshan Nanhai Zhongxing Plastic Factory

认证范围 Scope:
生产及销售: 塑料管材、管件、塑料型材、塑料板材、塑料配件。
Manufacturing: Plastic pipes, fittings, plastic profiles, plastic sheets, plastic accessories.

认证依据: GB/T19001-2008/ISO9001:2008

颁发机构: 深圳中检认证有限公司
GM

Beide

APPLICATION FOR CONSTRUCTION PRODUCTS DIRECTIVE

On behalf of
FOSHAN ZHONG XING CHENG PLASTIC FACTORY
Plastic Tile
Model: ASA-1

Prepared For: FOSHAN ZHONG XING CHENG PLASTIC FACTORY
No. 26, Industry Road, Dandan, Foshan, Guangdong, China

Prepared By: BEIDE (UK) PRODUCT SERVICE LIMITED
U.K. FLAT 107, 25 INDESOON SQUARE, LONDON, UNITED KINGDOM
CHINA: 6F, Bldg E, Houm 3rd Ind Zone, Xixiang, Bao" An Dist, Shenzhen, China

Date of Test: Feb. 18-Mar. 18, 2016
Date of Report: Mar. 11, 2016
Report Number: B-61020170

CELAP

CERTIFICATE

Application Number: 2016-01-01
Product Name: Plastic Tile
Model: ASA-1

Manufacturer: FOSHAN ZHONG XING CHENG PLASTIC FACTORY
Address: No. 26, Industry Road, Dandan, Foshan, Guangdong, China

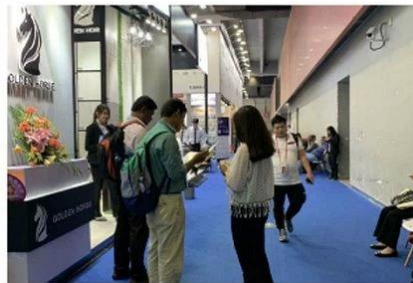
Prepared For: FOSHAN ZHONG XING CHENG PLASTIC FACTORY
No. 26, Industry Road, Dandan, Foshan, Guangdong, China

Prepared By: BEIDE (UK) PRODUCT SERVICE LIMITED
U.K. FLAT 107, 25 INDESOON SQUARE, LONDON, UNITED KINGDOM
CHINA: 6F, Bldg E, Houm 3rd Ind Zone, Xixiang, Bao" An Dist, Shenzhen, China

Date of Test: Feb. 18-Mar. 18, 2016
Date of Report: Mar. 11, 2016
Report Number: B-61020170

www.celab.com

Exhibition



Packaging



FAQ

***Are you manufacturer or trader?**

*Yes, we are real manufacturer, there are many pictures in our company introduction .if you need other special product, we will do our best to help you, so we can build a long-term business relationship.

***Can I order the product with i want to profile?**

*Of course you can, also we will produce the products according to your detail requests.

***Can you put my company's brand on your products?**

*Yes,we are accept OEM&ODM service.But we need some information about your company.

***How to install the roofing sheet?**

*Please contact our service staff, we have installation video for you.

***Can you provide samples for me to open the market and test quality?**

*Yes,we can.We can provide free samples to you.

***Could you pay the shipping cost?**

Please contact our service staff.

***What is your trade term?**

- * Payment: T/T 30% in advance, balance before shipment.
- Production Lead Time: Within 7 working days after 30% deposit
- FOB Shipping Port: Foshan,Guangzhou,Shenzhen