

More Types

1130 corrugaetd sheets



1130 trapezoidal sheets



900 high wave



980 high wave



□□□□□□□□

- **Anti-corrosion**

- ZhongXingCheng PVC plastic roofing sheet in the long term against acid, alkali, salt and other corrosive chemicals. Experiments prove that: In the salt, alkali and 60% following a 24-hour soaking in acid, no chemical reaction. Very suitable for acid rainprone areas and coastal use, the effect was particularly significant.

- □□□□□□

- ZhongXingCheng PVC plastic roofing sheet's surface materials is co-extruded in ultra-weather surface layer resin to ensure the durability of products (for 15 years in quality assurance).

- **Fire Resistance**

- ZhongXingCheng PVC plastic roofing sheet is a flame retardant materials, through the national fire authority of the department according to GB8624-2006 standards for testing, fire safety performance \geq B1 grade.

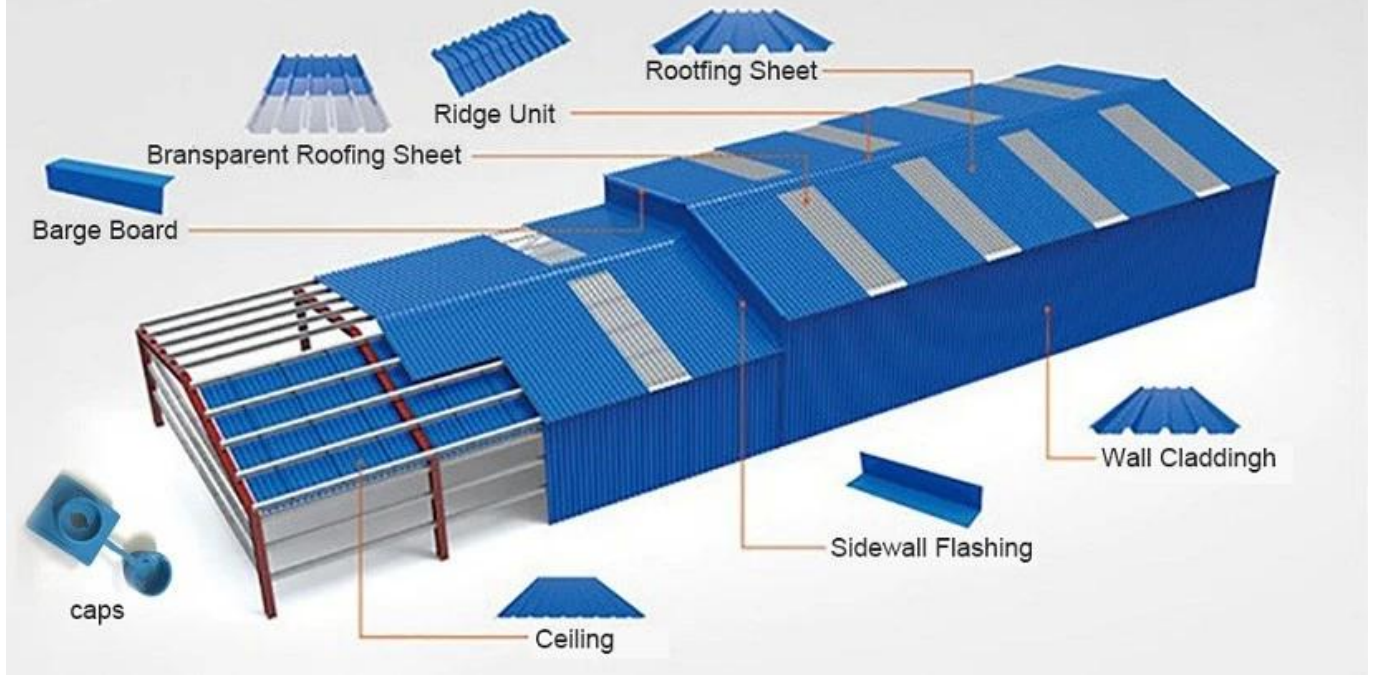
- **Heat Insulation**

- ZhongXingCheng PVC plastic roofing sheet's thermal conductivity coefficient is 0.325w/mk, clay tile is about 1 / 310, cement tile 1 / 5, 0.5mm thick color steel tile 1 / 2000. Therefore, without considering the case of insulation layer increases, the PVC plastic roofing sheet can still achieve the best thermal insulation properties.

- **Sound Insulation**

- The tests prove that: in suffering heavy rain, high winds the impact of outside noise, ZhongXingCheng plastic roof tiles sheets roofing sheet has a good absorption of the noise effect, noise down 30dB than color steel tile.

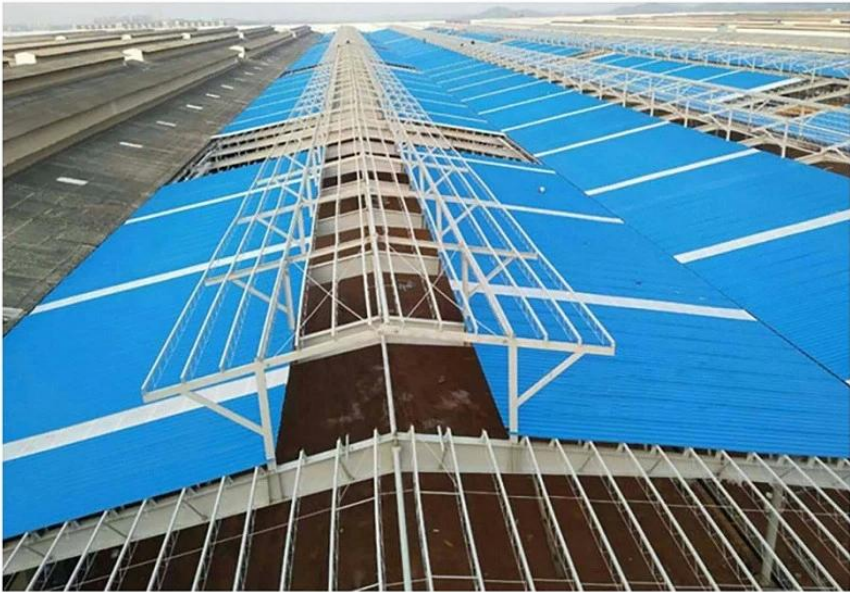
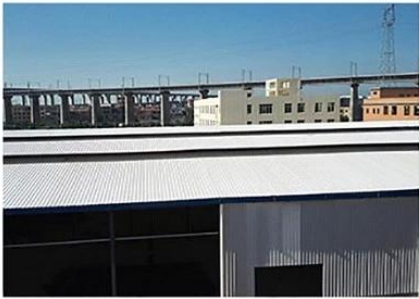
PVC accessories



Our Factory



Engineering case



Certificate



Exhibition



Packaging



FAQ

***Are you manufacturer or trader?**

*Yes, we are real manufacturer, there are many pictures in our company introduction .if you need other special product, we will do our best to help you, so we can build a long-term business relationship.

***Can I order the product with i want to profile?**

*Of course you can, also we will produce the products according to your detail requests.

***Can you put my company's brand on your products?**

*Yes,we are accept OEM&ODM service.But we need some information about your company.

***How to install the roofing sheet?**

*Please contact our service staff, we have installation video for you.

***Can you provide samples for me to open the market and test quality?**

*Yes,we can.We can provide free samples to you.

***Could you pay the shipping cost?**

Please contact our service staff.

***What is your trade term?**

- * Payment: T/T 30% in advance, balance before shipment.
- Production Lead Time: Within 7 working days after 30% deposit
- FOB Shipping Port: Foshan,Guangzhou,Shenzhen