

Design☐Spanish style
Color Lasting☐10 years no fading
Comprimento: Personalizado
Thickness☐1.8mm,2.0mm☐2.2mm☐
2.5mm,2.8mm,3.0mm
Overall width☐1130mm
Effective width☐1000/1050mm
Purlin spacing☐660mm
Layers☐3 layers
Surface☐Embossed/Smoothsurface



Carrying capacity



Flame retardant



Not Conduct Electricity



Corrosion Resistance



White



Green



Blue



Yellow

More Types

1130 corrugaetd sheets



1130 trapezoidal sheets



900 high wave



980 high wave



Característica

- **Anti-corrosão**

- ZhongXingCheng PVC plastic roofing sheet in the long term against acid, alkali, salt and other corrosive chemicals. Experiments prove that: In the salt, alkali and 60% following a 24-hour soaking in acid, no chemical reaction. Very suitable for acid rainprone areas and coastal use, the effect was particularly significant.

- **À prova d'água**

- ZhongXingCheng PVC plastic roofing sheet's surface materials is co-extruded in ultra-weather surface layer resin to ensure the durability of products (for 15 years in quality assurance).

- **Resistência ao fogo**

- ZhongXingCheng PVC plastic roofing sheet is a flame retardant materials, through the national fire authority of the department according to GB8624-2006 standards for testing, fire safety performance \geq B1 grade.

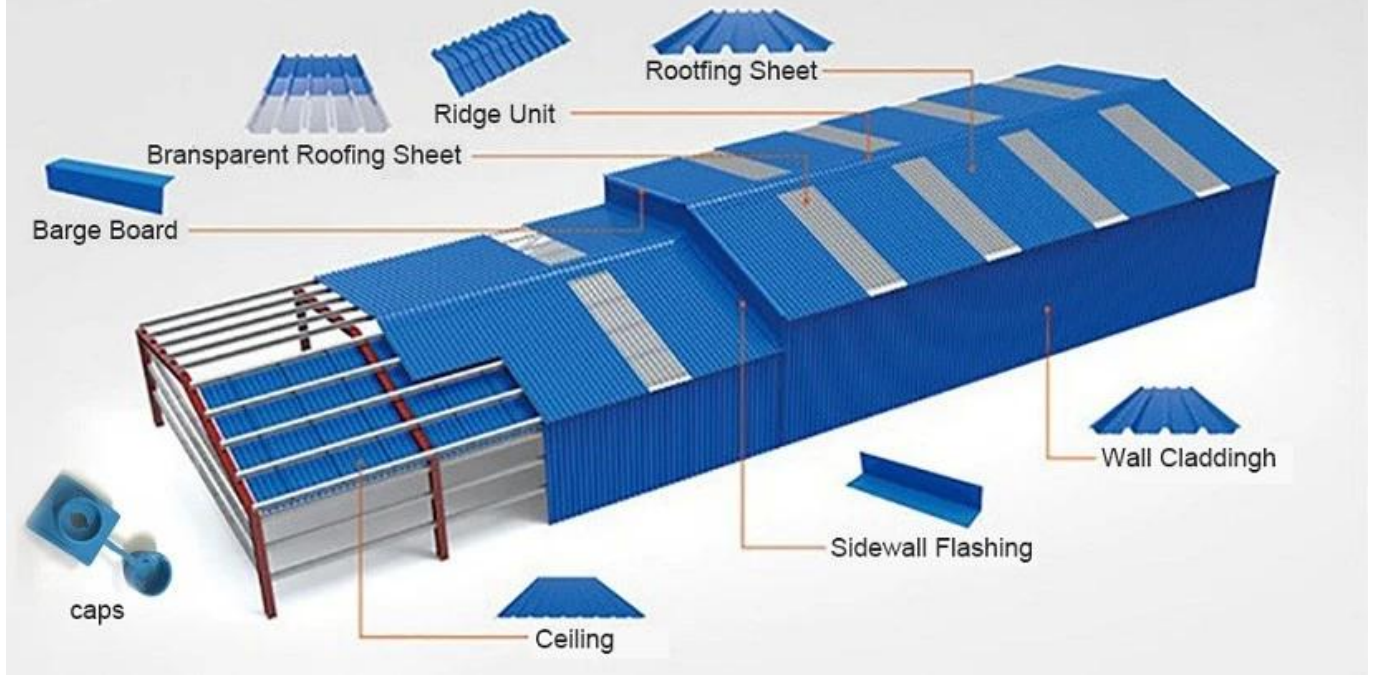
- **Heat Insulation**

- ZhongXingCheng PVC plastic roofing sheet's thermal conductivity coefficient is 0.325w/mk, clay tile is about 1 / 310, cement tile 1 / 5, 0.5mm thick color steel tile 1 / 2000. Therefore, without considering the case of insulation layer increases, the PVC plastic roofing sheet can still achieve the best thermal insulation properties.

- **Sound Insulation**

- The tests prove that: in suffering heavy rain, high winds the impact of outside noise, ZhongXingCheng plastic roof tiles sheets roofing sheet has a good absorption of the noise effect, noise down 30dB than color steel tile.

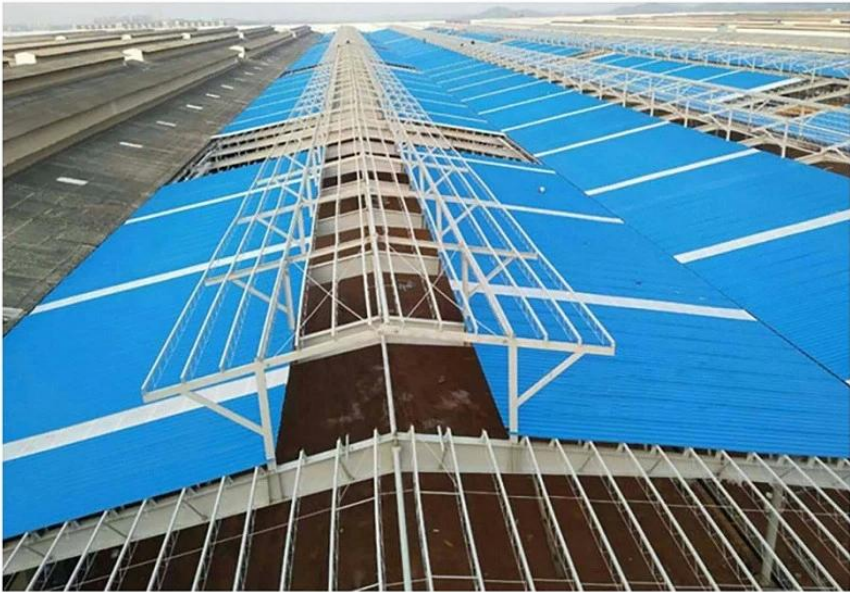
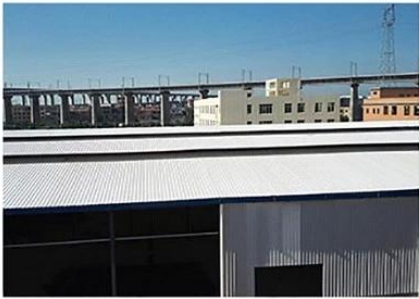
PVC accessories



Our Factory



Engineering case



Certificate

检验报告
Test Report

佛山市质量监督检测中心
Foshan Supervision Testing Centre of Quality and Metrology

Foshan Supervision Testing Centre of Quality and Metrology
Test Report

No.	Item	Unit	Requirement	Result	Remark
1	Appearance	—	The color of tile should be uniform. There should be no stains, cracks or visible imperfections on the surface. Edge of the tile should be clean without dust. Warpage should be less, and tolerance on warpage.	Confirmed	Pass
2	Walk distance	mm	≤ 10	8	Pass
3	Thickness deviation	mm	± 0.2	± 0.12	Pass
4	Density	g/cm ³	—	1.92	Pass
5	Flexure strength	MPa	≥ 20	26	Pass
6	Flexural modulus	%	≥ 20	32	Pass
7	Water absorption (10h, 20°C)	%	No pollution marks or water absorption marks	Confirmed	Pass
8	Acid resistance (10%, HCl, 24h)	%	No obvious color change or delamination phenomenon	Confirmed	Pass
9	Alkali resistance (10%, NaOH, 24h)	%	No obvious color change or delamination phenomenon	Confirmed	Pass
10	Impact resistance (1kg, 1.0m)	mm	≤ 1.5	1.2	Pass
11	Change index	%	≤ 0.1	0.08	Pass

Foshan Supervision Testing Centre of Quality and Metrology
Test Report

No.	Item	Unit	Requirement	Result	Remark
1	Appearance	—	The surface should be smooth with uniform coloration and no visible cracks, pits, scratch marks, or other defects.	Confirmed	Pass
2	Surface layer thickness	mm	≥ 0.15	0.18	Pass
3	Flexure strength	MPa	≥ 20	26	Pass
4	Flexural modulus	%	≥ 20	32	Pass
5	Flexural strength	MPa	≥ 20	26	Pass
6	Flexural modulus	%	≥ 20	32	Pass
7	Density	g/cm ³	—	1.92	Pass
8	Water absorption (10h, 20°C)	%	≤ 0.1	0.08	Pass
9	Acid resistance (10%, HCl, 24h)	%	No pollution marks or water absorption marks	Confirmed	Pass
10	Alkali resistance (10%, NaOH, 24h)	%	No pollution marks or water absorption marks	Confirmed	Pass
11	Impact resistance (1kg, 1.0m)	mm	≤ 1.5	1.2	Pass
12	Change index	%	≤ 0.1	0.08	Pass
13	Water absorption (10h, 20°C)	%	≤ 0.1	0.08	Pass
14	Flexural strength	MPa	≥ 20	26	Pass
15	Flexural modulus	%	≥ 20	32	Pass

质量管理体系认证证书
Quality Management System Certificate

佛山市南海众兴塑料制品有限公司
Foshan Nanhai Zhongxing Plastic Factory

认证范围 Scope:
塑料注塑件 塑料制品的生产及批发零售
Plastic Injection Molding, Plastic Products Production and Wholesale/Retail

认证依据标准: GB/T19001-2008/ISO9001:2008

发证机构: 广东中检认证有限公司
GAM

Beide

APPLICATION FOR CONSTRUCTION PRODUCTS DIRECTIVE

On Behalf of
FOSHAN ZHONG XING CHENG PLASTIC FACTORY
Plastic Tile
Model: ASA-1

Prepared For: FOSHAN ZHONG XING CHENG PLASTIC FACTORY
No. 26, Industry Road, Dandan, Foshan, Guangdong, China

Prepared By: BEIDE (UK) PRODUCT SERVICE LIMITED
U.K.: FLAT 107, 25 INDESOON SQUARE, LONDON, UNITED KINGDOM
CHINA: 6F, Bldg E, Hound 3rd Ind Zone, Xixiang Bay, An Dat, Shenzhen, China

Date of Test: Feb. 18-Mar. 18, 2016
Date of Report: Mar. 11, 2016
Report Number: B-61020170

celab

CERTIFICATE

Product Name: Plastic Tile
Model: ASA-1, PA66, APAC-1, APAC-2, FPM-1, FPM-2

Manufacturer: FOSHAN ZHONG XING CHENG PLASTIC FACTORY
Address: No. 26, Industry Road, Dandan, Foshan, Guangdong, China

Prepared For: FOSHAN ZHONG XING CHENG PLASTIC FACTORY
No. 26, Industry Road, Dandan, Foshan, Guangdong, China

Prepared By: BEIDE (UK) PRODUCT SERVICE LIMITED
U.K.: FLAT 107, 25 INDESOON SQUARE, LONDON, UNITED KINGDOM
CHINA: 6F, Bldg E, Hound 3rd Ind Zone, Xixiang Bay, An Dat, Shenzhen, China

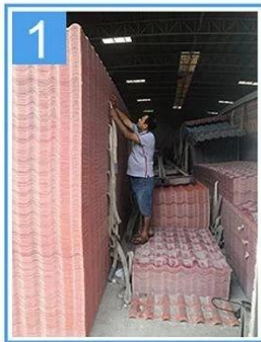
Date of Test: Feb. 18-Mar. 18, 2016
Date of Report: Mar. 11, 2016
Report Number: B-61020170

www.celab.com

Exhibition



Packaging



FAQ

***Are you manufacturer or trader?**

*Yes, we are real manufacturer, there are many pictures in our company introduction .if you need other special product, we will do our best to help you, so we can build a long-term business relationship.

***Can I order the product with i want to profile?**

*Of course you can, also we will produce the products according to your detail requests.

***Can you put my company's brand on your products?**

*Yes,we are accept OEM&ODM service.But we need some information about your company.

***How to install the roofing sheet?**

*Please contact our service staff, we have installation video for you.

***Can you provide samples for me to open the market and test quality?**

*Yes,we can.We can provide free samples to you.

***Could you pay the shipping cost?**

Please contact our service staff.

***What is your trade term?**

- * Payment: T/T 30% in advance, balance before shipment.
- Production Lead Time: Within 7 working days after 30% deposit
- FOB Shipping Port: Foshan,Guangzhou,Shenzhen