

Product show

Design □ Spanish style
Color Lasting □ 10 years no fading
Length □ customized
Thickness □ 1.8mm, 2.0mm □ 2.2mm □
2.5mm, 2.8mm, 3.0mm
Overall width □ 1130mm
Effective width □ 1000/1050mm
Purlin spacing □ 660mm
Layers □ 3 layers
Surface □ Embossed/Smooth surface



Carrying capacity



Flame retardant



Not Conduct Electricity



Corrosion Resistance



White



Green



Blue



Yellow

More Types

1130 corrugaetd sheets



1130 trapezoidal sheets



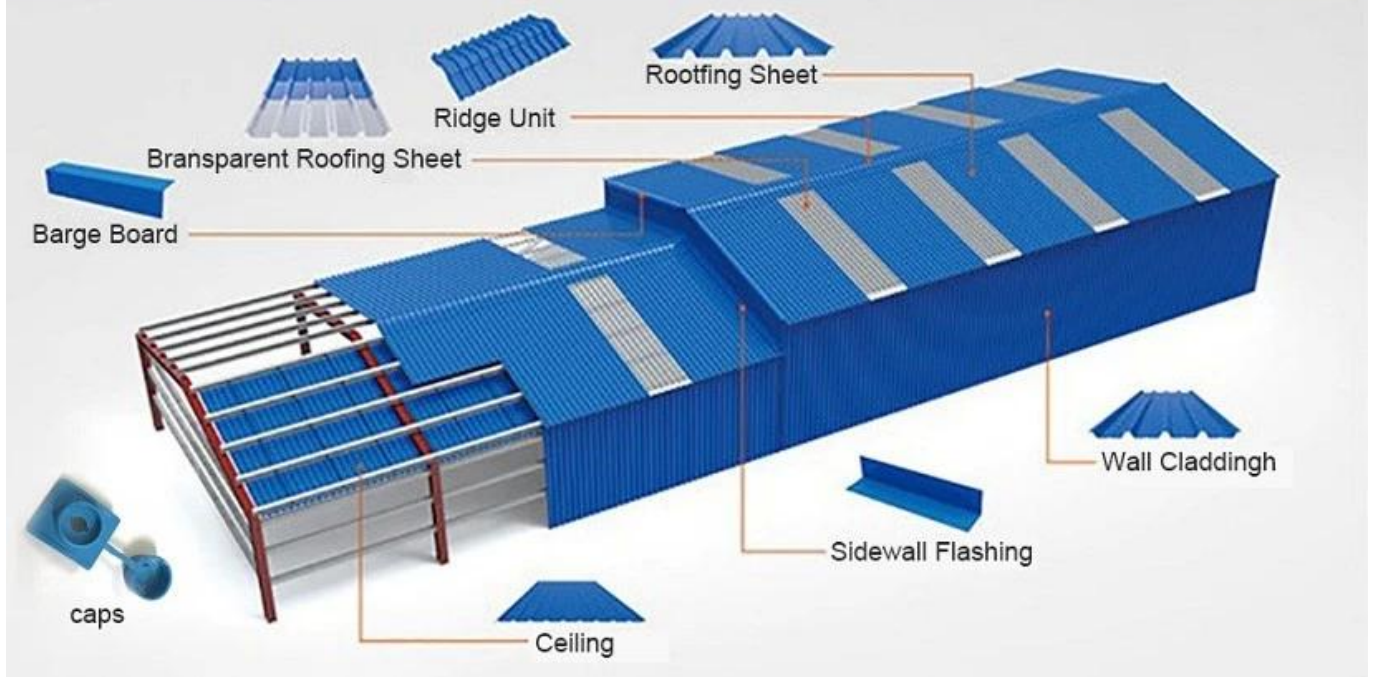
900 high wave



980 high wave



PVC accessories

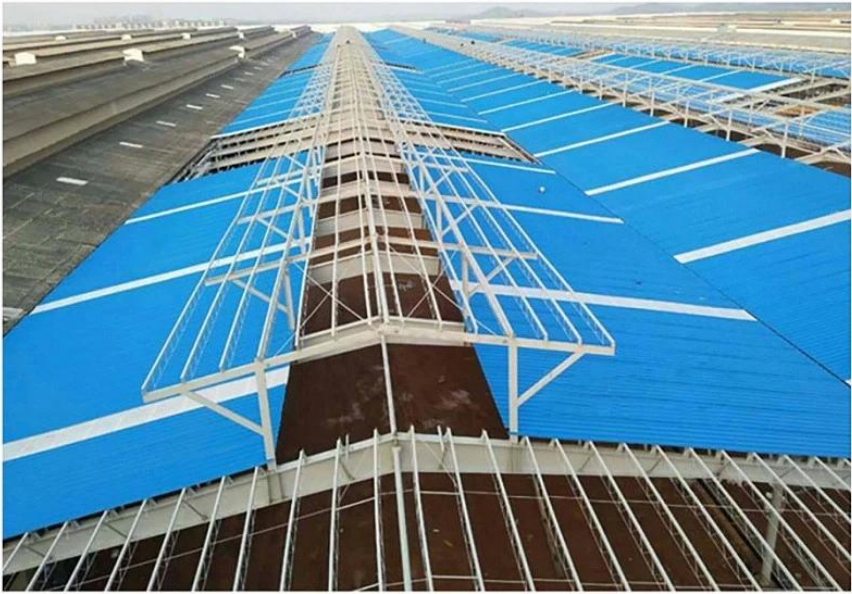


ZXC New Material Technology Co., Ltd. Our products include PVC sheets, ASA Synthetic Resin Roof Tile, FRP Roofing Tiles, gutter, upvc roofing sheets etc. If your order matches our stock size details, we can faster delivery time. Welcome Contact Us Custom.

Our Factory



Engineering case



Certificate



Foshan Supervision Testing Centre of Quality and Metrology

Test Report

No.	Item	Unit	Requirement	Result	Remark
1	Appearance	---	The color of tile should be uniform. There should be no bubble, crack or visible impurities on the surface. Edge of the tile should be clean without burr. Warpage should be less, and both sides are straight.	Confirmed	Pass
2	Walk distance	mm	≤ 10	8	Pass
3	Thickness deviation	mm	± 0.2	0.10	Pass
4	Slip-resistance	1/100	---	170	---
5	Impact strength	MPa	≥ 2.0	3.0	Pass
6	Flexural strength	%	≥ 2.0	3.0	Pass
7	Water absorption (1h, 3h)	---	No qualitative limits or mark after report out.	Confirmed	Pass
8	Acid resistance (20%, H2SO4, 24h)	---	No obvious color change or delamination phenomenon.	Confirmed	Pass
9	Alkali resistance (20%, NaOH, 24h)	---	No obvious color change or delamination phenomenon.	Confirmed	Pass
10	Freeze-thaw resistance (open/closed cycle 50)	mm	≤ 1.0	0.8	Pass
11	Change index	%	≤ 0.1	0.06	Pass

Foshan Supervision Testing Centre of Quality and Metrology

Test Report

No.	Item	Unit	Requirement	Result	Remark
1	Appearance	---	The surface should be smooth with uniform coloration and no visible crack, hole, scratch, bubble, or other defect, color difference.	Confirmed	Pass
2	Surface layer thickness	mm	≥ 0.15	0.18	Pass
3	Tensile strength	MPa	≥ 2.0	2.8	Pass
4	Flexural strength	%	≥ 2.0	3.0	Pass
5	Flexural modulus	MPa	≥ 2000	3000	Pass
6	Impact strength	kJ/m ²	≥ 1.0	1.5	Pass
7	Water absorption (1h, 3h)	---	No qualitative limits or mark after report out.	Confirmed	Pass
8	Acid resistance (20%, H2SO4, 24h)	---	No obvious color change or delamination phenomenon.	Confirmed	Pass
9	Alkali resistance (20%, NaOH, 24h)	---	No obvious color change or delamination phenomenon.	Confirmed	Pass
10	Freeze-thaw resistance (open/closed cycle 50)	mm	≤ 1.0	0.8	Pass
11	Change index	%	≤ 0.1	0.06	Pass
12	Water absorption (1h, 3h)	---	No qualitative limits or mark after report out.	Confirmed	Pass
13	Water absorption (1h, 3h)	---	No qualitative limits or mark after report out.	Confirmed	Pass
14	Water absorption (1h, 3h)	---	No qualitative limits or mark after report out.	Confirmed	Pass
15	Water absorption (1h, 3h)	---	No qualitative limits or mark after report out.	Confirmed	Pass



Exhibition



Packaging



FAQ

***Are you manufacturer or trader?**

*Yes, we are real manufacturer, there are many pictures in our company introduction .if you need other special product, we will do our best to help you, so we can build a long-term business relationship.

***Can I order the product with i want to profile?**

*Of course you can, also we will produce the products according to your detail requests.

***Can you put my company's brand on your products?**

*Yes,we are accept OEM&ODM service.But we need some information about your company.

***How to install the roofing sheet?**

*Please contact our service staff, we have installation video for you.

***Can you provide samples for me to open the market and test quality?**

*Yes,we can.We can provide free samples to you.

***Could you pay the shipping cost?**

Please contact our service staff.

***What is your trade term?**

* Payment: T/T 30% in advance, balance before shipment.

? Production Lead Time: Within 7 working days after 30% deposit

? FOB Shipping Port: Foshan,Guangzhou,Shenzhen