

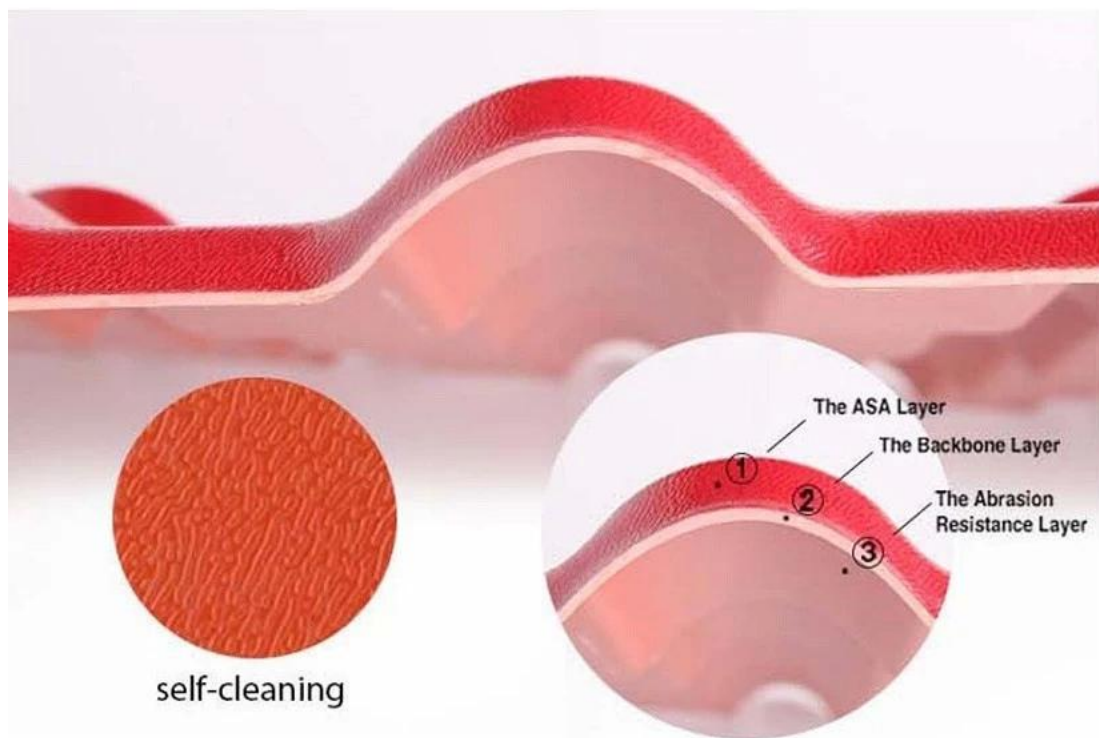
Product Name	Synthetic Resin Roof Tile
Brand	ZXC
Place of Origin	Foshan city, Guangdong province, China(Mainland)
Material	Acrylonitrile Styrene acrylate copolymer, Polyvinyl chloride, Calcium powder, other chemical materials
Guarantee	25 years
Certification	ISO9001 / SGS / CE
Delivery Time	1x20GP for 6 days,1x40GP for 7 days
Section Length	219mm
Overall Width	1050mm
Effective Width	960mm
Thickness	2.3mm / 2.5mm / 2.8mm / 3.0mm
Length	Must be a multiple of section
Colour	Can be customized
Layers	2 or 3 layers composite roof tiles
Design	composite roof tiles
Tile	Roof tile

Product show





More Types



Structure

Surface: Imported ASA raw materials from the world's top 500 GE company, Super weather resistance, truly 10 years don't have color fading. The standard is that the thickness of the surface reaches 0.15mm, We can reach 0.15-0.18mm.

Medium: The material is Polyvinyl chloride and Calcium powder, the proportion is 1:1. This is the best ratio after many trials. This ratio guarantees the strength and toughness of the product.

Bottom: The important material also is Polyvinyl chloride and Calcium powder, but add other chemical materials. We are make the same color as the surface color and white color. Gloss of products is best in the industry.

Feature

• Long-lasting Color (at least 10 years)

• The product features ultra durability in natural environment. Even under tough conditions of exposure to UV, high temperature and freezing coldness, it still keeps stable color.

• Excellent Anti-corrosion performance

• Synthetic Resin Tile can resist longterm acid, alkali and salt corrosion, etc. Tests have proved that there would be no chemical reaction after soaking in salt and alkali and various acid under 60%. It is ideal for application in areas where acid rain is common.

• Good Waterproofing Performance

• Synthetic Resin Tile selects highly weather-resistant resin, which is dense and absorbing no water, with no pore penetration problem. The product is 45% wider than traditional tiles with less roof contact, so synthetic resin's waterproof performance has greatly increased than traditional tiles.

• Strong Fire Resistance

• Belonging flame retardant material, with fire resistance \geq B1 as tested by national authoritative departments according to GB8624-2006 standard.

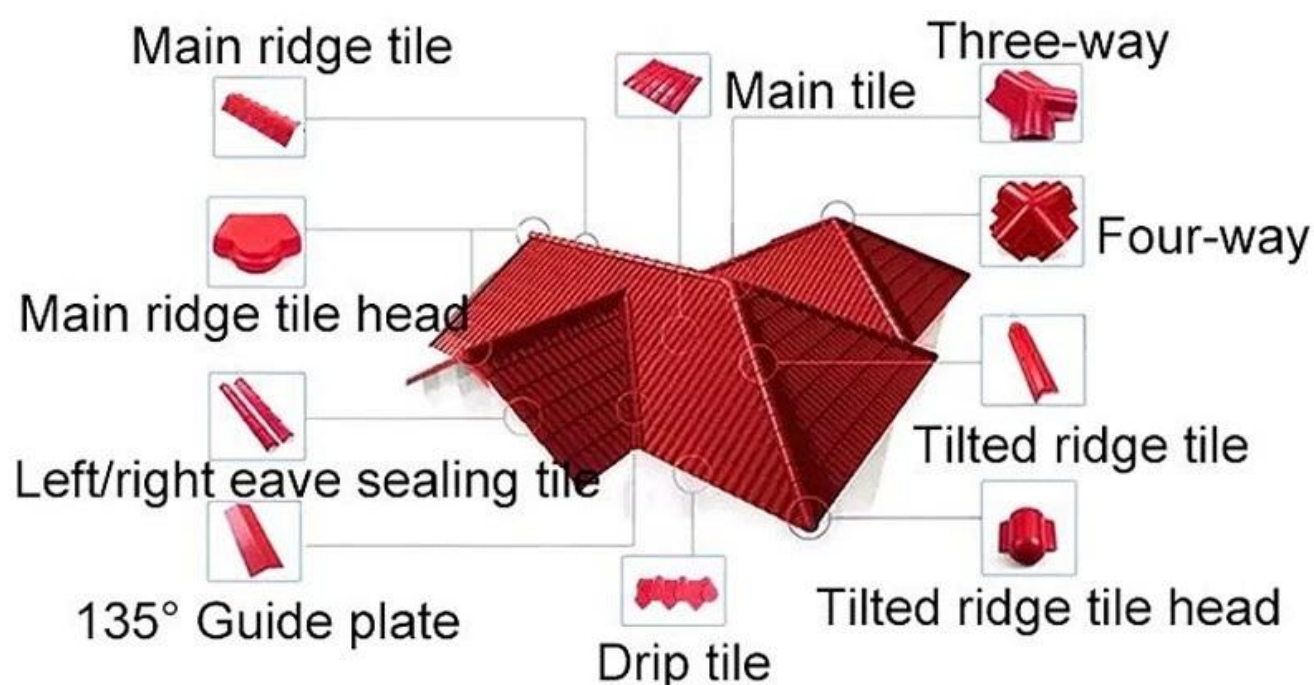
• Excellent Heat Insulating Property

• The heat conductivity coefficient is 0.325w/m.k, about 1/300 of clay tile, 1/50 of cement tile, and 1/2000 of thick color steel tile. Therefore without considering adding heat-preserving layer, the heat insulation and heat preservation of synthetic resin tile can still be optimized.

• Good sound insulation

• Tests have proved that synthetic resin tiles have excellent noise absorption function when suffered heavy rains and strong winds.

resin roof tile saccessories



▶ Step1



▶ Step2



▶ Step3



▶ Step4



▶ Step5

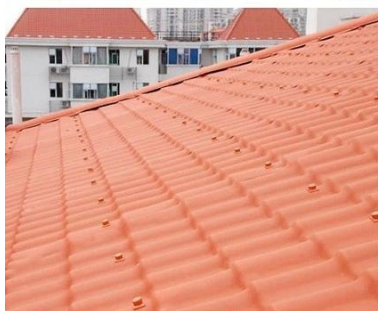


▶ Step6

Our Factory



Engineering case



Certificate



Packaging



Thickness		2.3mm	2.5mm	2.8mm	3.0mm
Weight (kg/SQM)		4.6	5.0	5.6	6.0
Container Load Capacity	20 GP (21 Tons)	4500	4200	3750	3500
	40 GP (26 Tons)	5600	5200	4600	4300

Feature:

1. Excellnt Anti-corrosion Performance
- 2.Good Waterproof Performance
- 3.Fire Resistance
- 4.Heat insulation
- 5.Sound ins ulation
- 6.Weather fastness, ageing resistance

Package: Nude or standard export package

FAQ

***Are you manufacturer or trader?**

*Yes, we are real , there are many pictures in our company introduction .if you need other special product, we will do our best to help you, so we can build a long-term business relationship.

***Can I order the product with i want to profile?**

*Of course you can, also we will produce the products according to your detail requests.

***Can you put my company's brand on your products?**

*Yes,we are accept OEM&ODM service.But we need some information about your company.

***How to install the roofing sheet?**

*Please contact our service staff, we have installation video for you.

***Can you provide samples for me to open the market and test quality?**

*Yes, we can. We can provide free samples to you, Could you pay the shipping cost? Please contact our service staff.

***What is your trade term?**

* Payment: T/T 30% in advance, balance before shipment.

? Production Lead Time: Within 7 working days after 30% deposit

? FOB Shipping Port: Foshan, Guangzhou, Shenzhen