

Design □ Spanish style  
Color Lasting □ 10 years no fading  
Haba □ Na -customize  
Thickness □ 1.8mm, 2.0mm □ 2.2mm □  
2.5mm, 2.8mm, 3.0mm  
Overall width □ 1130mm  
Effective width □ 1000/1050mm  
Purlin spacing □ 660mm  
Layers □ 3 layers  
Surface □ Embossed/Smooth surface



Carrying capacity



Flame retardant



Not Conduct Electricity



Corrosion Resistance



White



Green



Blue



Yellow

# More Types

## 1130 corrugaetd sheets



## 1130 trapezoidal sheets



## 900 high wave



## 980 high wave



## **Feature**

- **Anti-corrosion**

- ZhongXingCheng PVC plastic roofing sheet in the long term against acid, alkali, salt and other corrosive chemicals. Experiments prove that: In the salt, alkali and 60% following a 24-hour soaking in acid, no chemical reaction. Very suitable for acid rainprone areas and coastal use, the effect was particularly significant.

- **Hindi nababasa**

- ZhongXingCheng PVC plastic roofing sheet's surface materials is co-extruded in ultra-weather surface layer resin to ensure the durability of products (for 15 years in quality assurance).

- **Fire Resistance**

- ZhongXingCheng PVC plastic roofing sheet is a flame retardant materials, through the national fire authority of the department according to GB8624-2006 standards for testing, fire safety performance  $\geq$  B1 grade.

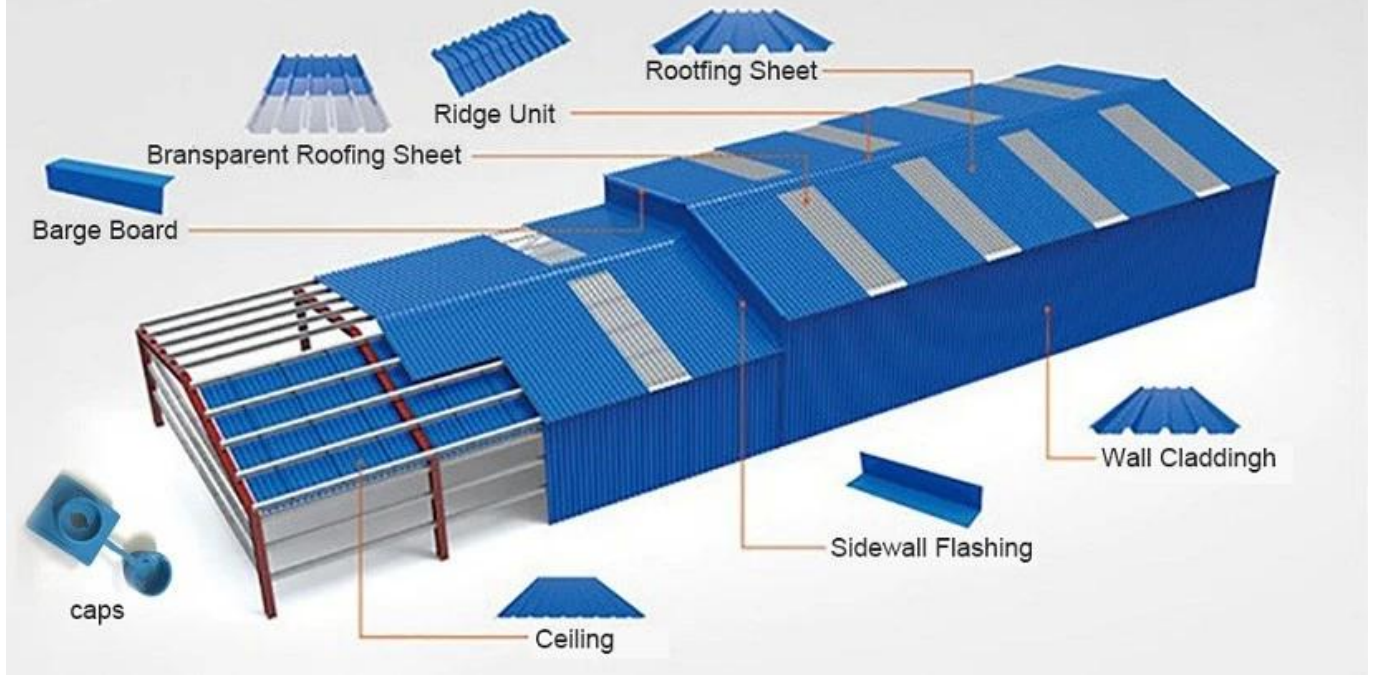
- **Heat Insulation**

- ZhongXingCheng PVC plastic roofing sheet's thermal conductivity coefficient is 0.325w/mk, clay tile is about 1 / 310, cement tile 1 / 5, 0.5mm thick color steel tile 1 / 2000. Therefore, without considering the case of insulation layer increases, the PVC plastic roofing sheet can still achieve the best thermal insulation properties.

- **Sound Insulation**

- The tests prove that: in suffering heavy rain, high winds the impact of outside noise, ZhongXingCheng plastic roof tiles sheets roofing sheet has a good absorption of the noise effect, noise down 30dB than color steel tile.

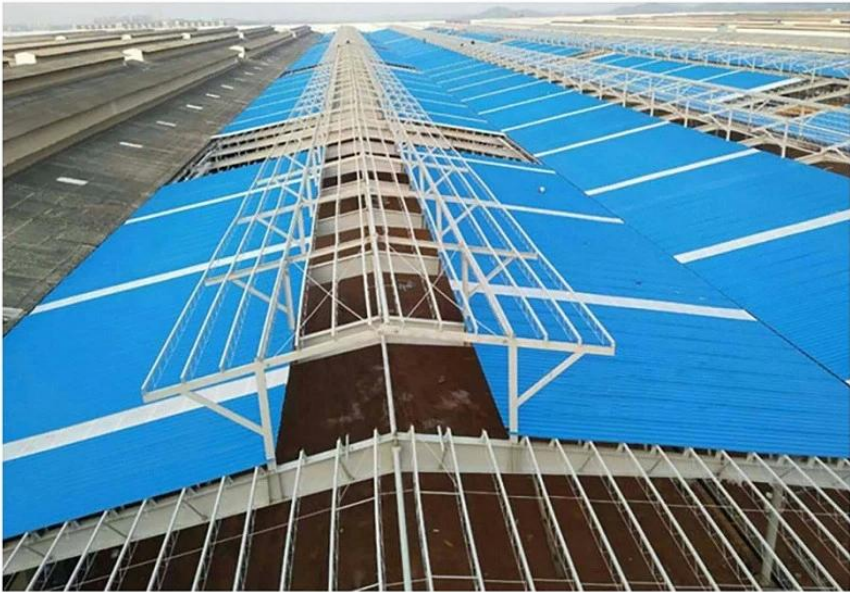
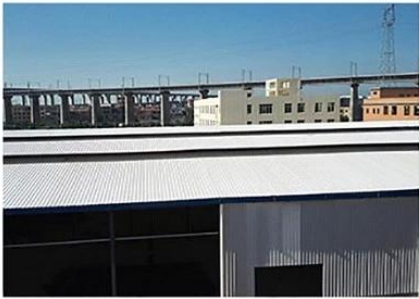
# PVC accessories



# Our Factory



# Engineering case



# Certificate

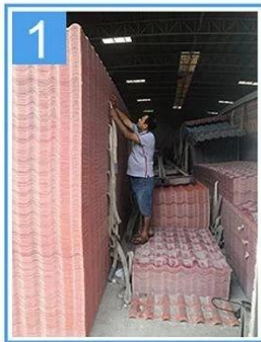


# Exhibition





# Packaging



# FAQ

**\*Are you manufacturer or trader?**

\*Yes, we are real manufacturer, there are many pictures in our company introduction .if you need other special product, we will do our best to help you, so we can build a long-term business relationship.

**\*Can I order the product with i want to profile?**

\*Of course you can, also we will produce the products according to your detail requests.

**\*Can you put my company's brand on your products?**

\*Yes,we are accept OEM&ODM service.But we need some information about your company.

**\*How to install the roofing sheet?**

\*Please contact our service staff, we have installation video for you.

**\*Can you provide samples for me to open the market and test quality?**

\*Yes,we can.We can provide free samples to you.

**\*Could you pay the shipping cost?**

Please contact our service staff.

**\*What is your trade term?**

- \* Payment: T/T 30% in advance, balance before shipment.
- Production Lead Time: Within 7 working days after 30% deposit
- FOB Shipping Port: Foshan,Guangzhou,Shenzhen