

# Product show

ZXC .  
 PVC ,  
 .

1. .2
- 3.
- 4.
- 5.
- 6.



zxc roofing tile industry

# After sales less is really good

Ten years of slow fading, **30** years of warranty



## GOOD CHOICE

Our advantage



Intimate service, strong product supply capacity



product available



A variety of styles and specifications sufficient stock



Support customization



Specifications and sizes can be consulted with customer service in detail, and quotations can be customized



Worry-free after sales



Manufacturers wholesale quality assurance, affordable prices, worry-free after-sales

סדר	12'-1
סדר	
סדר	3.0-6.8
סדר	1080 / 1050 / 980 / 930
סדר	30
סדר	ASA PVC
סדר	
סדר	B1
סדר	70
סדר	3
סדר	10

## [בדיקה יריעת פלסטיק על גג חרסिנה ללמוד 'יותר](#)



# SOURCE MANUFACTURER #

---

>





# THE TROUBLES OF TRADITIONAL ROOF TILES

#

other products

×



## severely faded

Wind and sun soften and fade



## There is a gap

Uneven with gaps, leaking rain



## uneven color

Weathered uneven color  
phenomenon

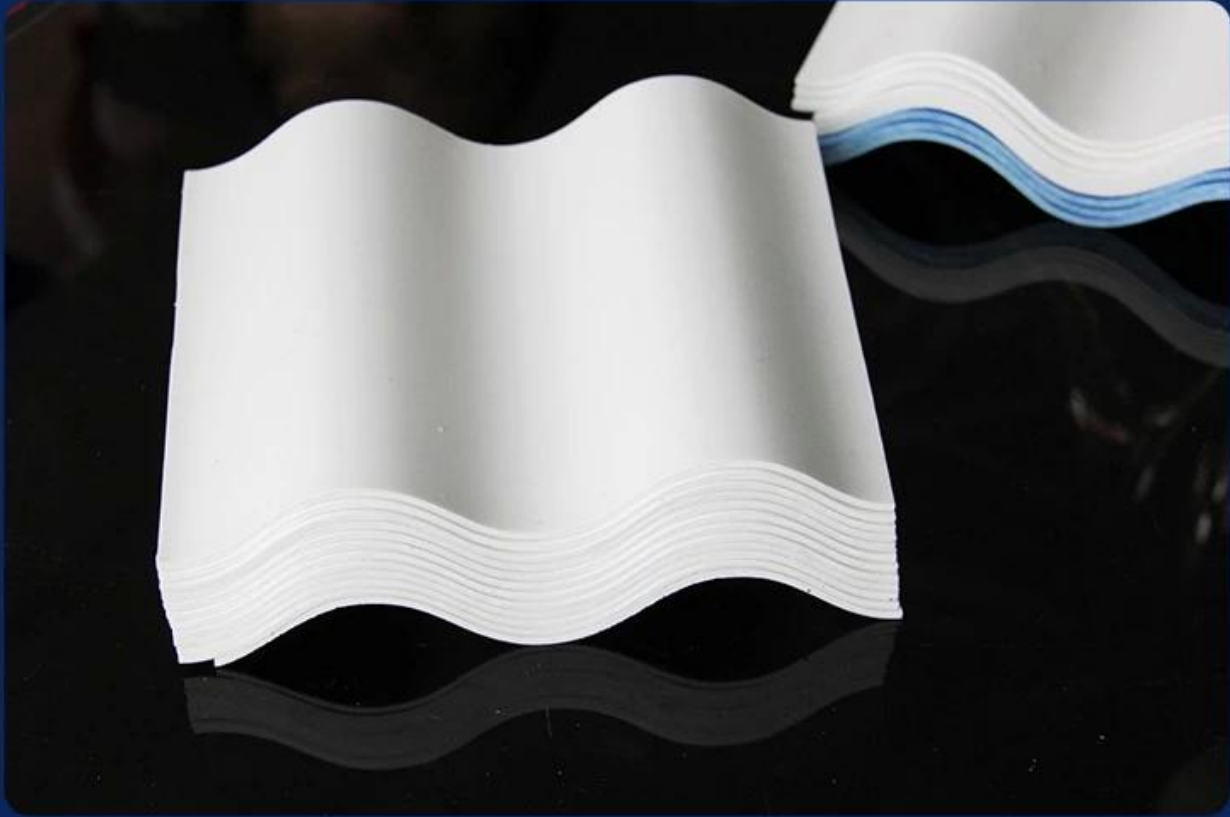


## Fragile

Fragile and complicated  
to install

## our products ✓

Ten years of slow fading, 30 years of warranty



**Uniform color, durable and not easy to fade**  
Good quality, durable and bright.



high toughness



Strong pressure resistance



Effective insulation



good sound insulatio



**thermal and acoustic insulation high-quality**  
Good sound insulation effect in case of external noise



**preservative**  
Anti-acid and alkali



**flame retardant performance**  
b1 class fire performance

# PRODUCT PARAMETERS

---

#

>



<b>thickness:</b> 1.0mm-3.0mm
<b>width:</b> 1130/980/900/840/1080mm
<b>length:</b> customizable
<b>waveform:</b> big hang, small wave
<b>type:</b> asa plastic roofing tile
<b>Be applicable:</b> Factory buildings, ware houses, markets, residences, market roads, canopies, chemically corrosive factories

---



# A variety of colors, optional to build different architectural styles

More colors can be customized



<Mlight yellow>



<dark blue>

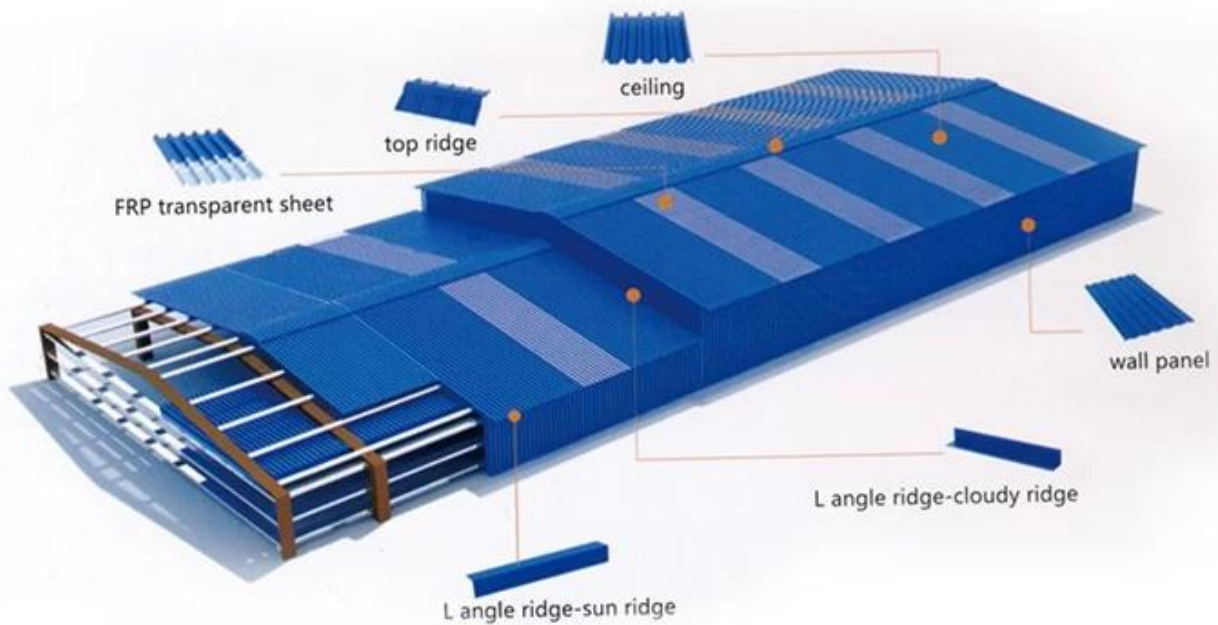


<grass green>



<Beige>

# Accessories and Installation Diagram



\*pvc plastic waterproof cap, used with self-tapping screws to fix the tile on the skeleton



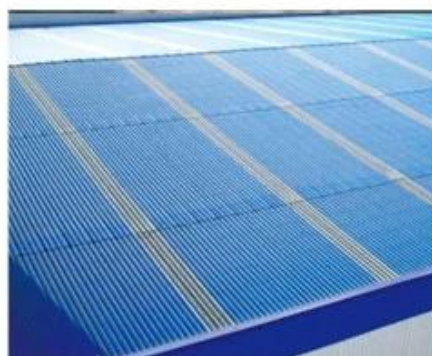


# CUSTOMER CASE SHOW #





Factory renovation



# Our Factory

Zhongxingcheng New Material Co., Ltd 專業生產 各種規格 的ASA, PVC, APVC, PVC 等 各種 塑料 材料 , 歡迎 各界 人士 垂詢 洽談



PVC, 鋼 鋼鋼鋼 鋼鋼 FRP, PVC, 鋼鋼鋼 鋼鋼 鋼鋼.



## Quality inspection instruments strictly control the quality

Each batch of products has undergone rigorous testing.



Gravity testing



Hardness testing



Tensile force testing



Impact resistance testing



Factory display



In-stock inventory



Own production line



Own production line



# Exhibition





# Certificate



# Official quality inspection, quality assurance

Multiple quality inspection and testing to ensure good quality.



IOS9000 certified



China Metrology Certification



CAL certification



佛山市质量计量监督检测中心  
**检验报告**  
 报告号: QB-049-02  
 样品名称: 瓦片  
 规格: G14-WT1489  
 共 2 页, 第 2 页

序号	检测项目	单位	标准要求	检测结果	判定
1	外观	—	表面光滑平整, 厚度均匀, 色泽一致, 无裂纹、缺口、破孔、烧焦、气泡、明显麻点、杂质点	符合	合格
2	密度	g/cm <sup>3</sup>	1.45~1.65	1.64	合格
3	弯曲性能	mm	支撑跨度800mm, 载荷40kg, 允许挠度≤50	15	合格
4	冲击性能	—	1kg重钢球, 1.5m自由落体, 冲击试样无碎裂, 试样经冲击试验后不得产生贯穿的孔穴或裂纹	符合	合格
5	吸水率	%	≥60	43	合格

审核: 王博斌  
 主检: 陈德聪  
**全部合格**

佛山市质  
 Foshan Supervision

# Packaging



# FAQ

\*?..... ..  
 ..... ..  
 ..... ..

?..... ..  
 ..... ..

?..... ..



Q: What is your company's main product? A: We are a professional manufacturer of various types of shoes, including men's, women's, and children's shoes. We have a rich experience in shoe production and a complete production line.

Q: What is your company's main market? A: Our main market is the United States, but we also export to other countries and regions.

Q: What is your company's production capacity? A: Our production capacity is 100,000 pairs of shoes per month, and we can accept large orders.

Q: What is your company's quality control system? A: We have a strict quality control system and a professional quality control team to ensure the quality of our products.

Q: What is your company's lead time? A: Our lead time is 7-10 days for standard orders, and 15-20 days for custom orders. We can provide a detailed lead time schedule for your reference.

Q: What is your company's payment terms? A: We accept various payment methods, including T/T, L/C, and Western Union.

Q: What is your company's shipping method? A: We can ship by air, sea, or express, and we will provide the most suitable shipping method for your needs.

Q: What is your company's FOB price? A: Our FOB price is competitive and reasonable, and we can provide a detailed price list for your reference.

Q: What is your company's contact information? A: Our contact information is as follows: [Address], [Phone Number], [Email Address].