

# Product show

□□□□ □□□□ □ □□□□□  
□□□□ □□ □□□□ 10 □ □□□□□□ □□□  
□□□□□ □□□□□ □ □□□□□  
□ □"□ 2.2 □ □"□ 2.0 ,□"□ 1.8 □ □□□□□  
□"□ 3.0 ,□"□ 2.8 ,□"□ 2.5  
□"□ 1130 □ □□□□ □□□□□  
□"□ 1000/1050 □ □□□□ □□□□□  
□"□ 660 □ □□□□□□ □□□□□□  
□□□□□ 3 □ □□□□□□  
□□□ □□□□/□□□□□□ □ □□□□ □□□□



Carrying capacity



Flame retardant



Not Conduct Electricity



Corrosion Resistance



White



Green



Blue



Yellow

# More Types

## 1130 corrugaetd sheets



## 1130 trapezoidal sheets



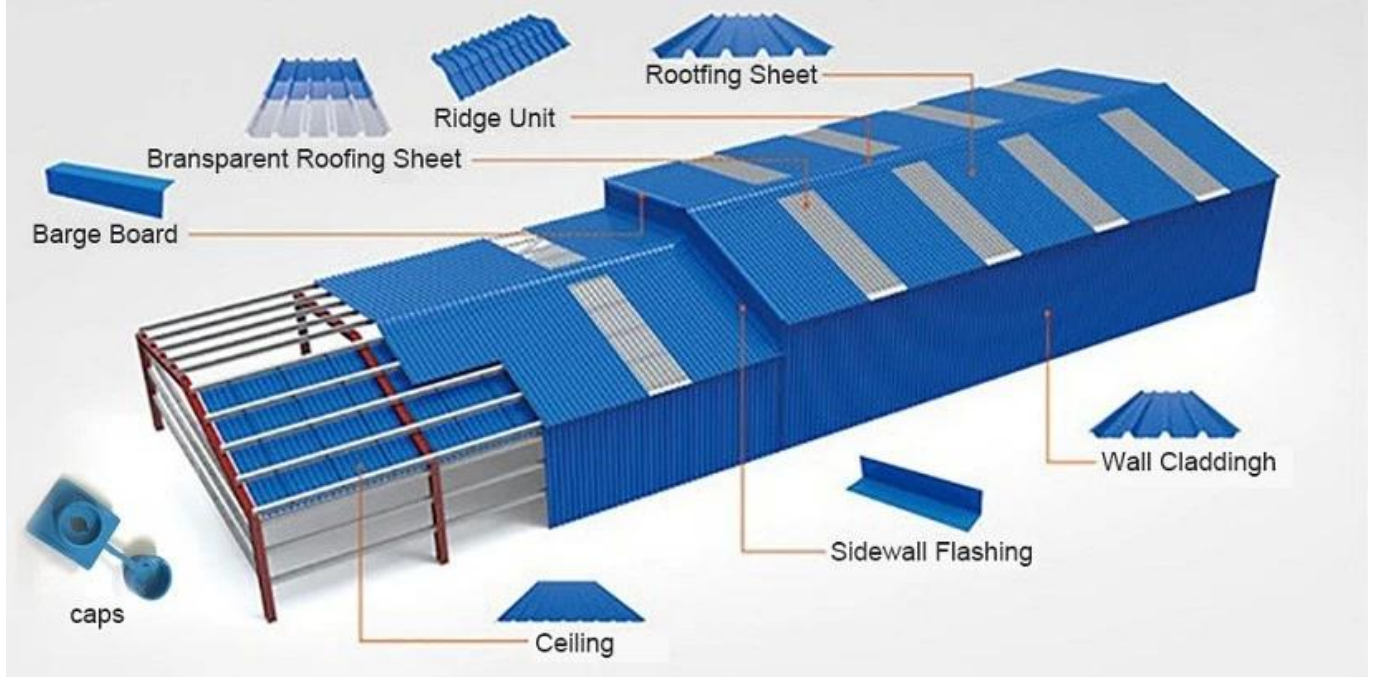
## 900 high wave



## 980 high wave



# PVC accessories



ZXC New Material Technology Co., 專業生產 PVC, ASA, FRP, UPVC 等各種 PVC 產品。本公司產品採用優質 PVC 原料，經科學配方和先進工藝生產而成，具有優良的耐老化、耐腐蝕、抗污、抗裂等性能。廣泛用於建築、交通、市政、農業等領域。歡迎各界人士垂詢洽購。

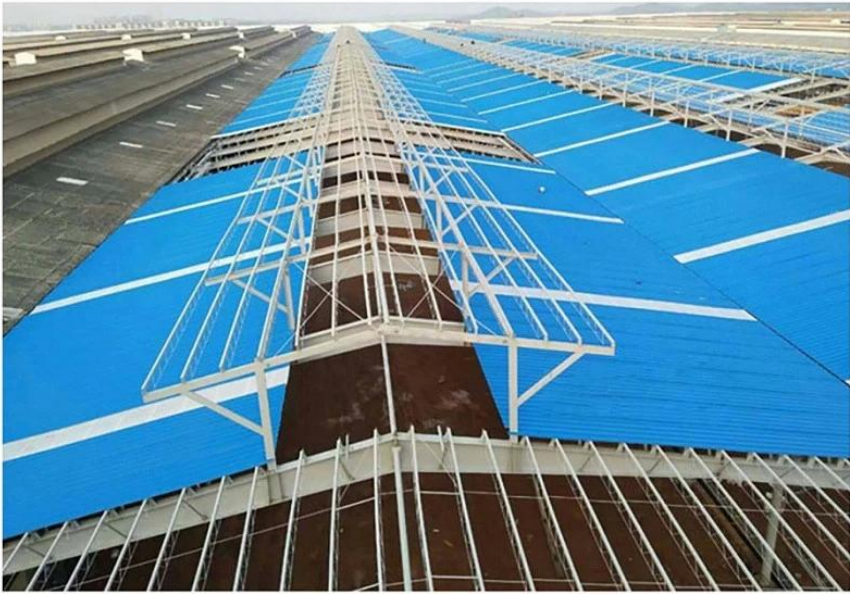


# Our Factory





# Engineering case







# Exhibition





# Packaging





# FAQ

\*? **Q1: How long is the lead time for the product?**

A: The lead time for the product is approximately 15-20 days. We can provide a more detailed lead time schedule upon request. \*  
The lead time for the product is approximately 15-20 days. We can provide a more detailed lead time schedule upon request.

? **Q2: Can you provide OEM/ODM services?**

A: Yes, we can provide OEM/ODM services. We have a professional R&D team and can provide customized products according to your requirements. \*

? **Q3: What is your payment method?**

A: We accept T/T, L/C, and Western Union. We also accept OEM/ODM. We can provide a more detailed payment method upon request.

? **Q4: Can you provide a sample?**

A: Yes, we can provide a sample. The sample fee is \$100. We can provide a more detailed sample fee upon request. \*

\*? **Q5: How long is the warranty period for the product?**

A: The warranty period for the product is 1 year. We can provide a more detailed warranty period upon request. \*

\*? **Q6: Can you provide a certificate of origin?**

A: Yes, we can provide a certificate of origin. We can provide a more detailed certificate of origin upon request.

\*? **Q7: How long is the lead time for the product?**

A: The lead time for the product is approximately 15-20 days. We can provide a more detailed lead time schedule upon request. \*  
30% T/T, 70% T/T. We can provide a more detailed lead time schedule upon request. \*  
30% T/T, 70% T/T. We can provide a more detailed lead time schedule upon request. \*  
30% T/T, 70% T/T. We can provide a more detailed lead time schedule upon request. \*