





zxc roofing tile industry

# After sales less is really good

Ten years of slow fading, **30** years of warranty



## GOOD CHOICE

Our advantage



Intimate service, strong product supply capacity



product available



A variety of styles and specifications sufficient stock



Support customization



Specifications and sizes can be consulted with customer service in detail, and quotations can be customized



Worry-free after sales



Manufacturers wholesale quality assurance, affordable prices, worry-free after-sales



# SOURCE MANUFACTURER #

---

>



# THE TROUBLES OF TRADITIONAL ROOF TILES

#

other products

×



## severely faded

Wind and sun soften and fade



## There is a gap

Uneven with gaps, leaking rain



## uneven color

Weathered uneven color  
phenomenon

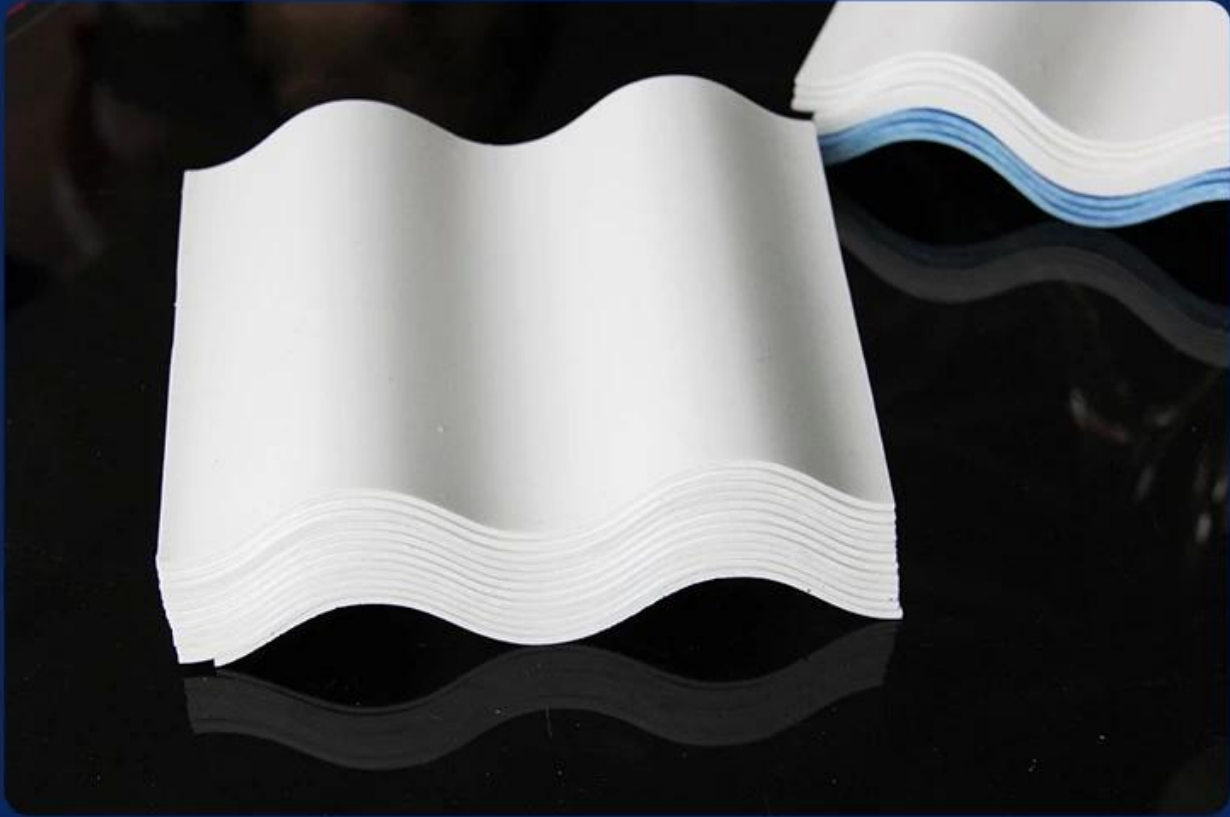


## Fragile

Fragile and complicated  
to install

## our products ✓

Ten years of slow fading, 30 years of warranty



**Uniform color, durable and not easy to fade**  
Good quality, durable and bright.



high toughness



Strong pressure resistance

Effective insulation



good sound insulatio



**thermal and acoustic insulation high-quality**  
Good sound insulation effect in case of external noise



**preservative**  
Anti-acid and alkali



**flame retardant performance**  
b1 class fire performance

# PRODUCT PARAMETERS

---

#

>



**thickness:** 1.0mm-3.0mm

**width:** 1130/980/900/840/1080mm

**length:** customizable

**waveform:** big hang, small wave

**type:** asa plastic roofing tile

**Be applicable:** Factory buildings, ware houses, markets, residences, market roads, canopies, chemically corrosive factories

---



# A variety of colors, optional to build different architectural styles

More colors can be customized



<Mlight yellow>



<dark blue>



<grass green>



<Beige>

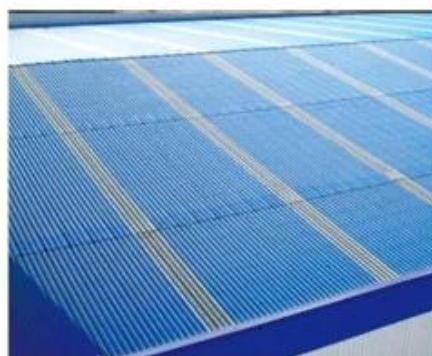


# CUSTOMER CASE SHOW #





Factory renovation



# Our Factory

Zhongxingcheng New Material Co., Ltd 專業生產 各種規格 各種顏色 各種厚度 各種表面處理 各種性能 各種用途 各種材料 各種產品 各種服務 各種支持 各種保障 各種滿意 各種信譽 各種口碑 各種推薦 各種合作 各種發展 各種進步 各種繁榮 各種昌盛 各種和諧 各種幸福 各種美好 各種希望 各種未來 各種夢想 各種追求 各種奮鬥 各種努力 各種堅持 各種毅力 各種勇氣 各種智慧 各種才華 各種創造 各種創新 各種突破 各種超越 各種領先 各種卓越 各種完美 各種無缺 各種無憾 各種無悔 各種無怨 各種無恨 各種無仇 各種無敵 各種無雙 各種無敵 各種無雙 各種無敵 各種無雙



## Quality inspection instruments strictly control the quality

Each batch of products has undergone rigorous testing.



Gravity testing



Hardness testing



Tensile force testing



Impact resistance testing

Factory display



In-stock inventory



Own production line



Own production line



# Exhibition





# Certificate

# Official quality inspection, quality assurance

## Multiple quality inspection and testing to ensure good quality.



IOS9000 certified



China Metrology Certification



CAL certification



MA  
201812121212

检

佛山市质  
Foshan Supervision

佛山市质量监测检测中心  
检验报告

No. G14-WT1489

No. G14-WT1489  
共 2 页 第 2 页

序号	检测项目	单位	标准要求	检测结果	判定
1	外观	—	表面光滑平整, 厚度均匀, 色泽一致, 无裂纹、缺口、气孔、烧焦、气泡、明显麻点、杂质点	符合	合格
2	密度	g/cm <sup>3</sup>	1.45~1.65	1.64	合格
3	弯曲性能	mm	支撑跨度800mm, 载荷40kg, 允许挠度≤50	15	合格
4	冲击性能	—	1kg重钢球, 1.5m自由落体, 冲击试样无裂纹, 试样经冲击试验后不得产生贯穿的孔穴或裂纹	符合	合格
5	抗拉强度	%	≥60	63	合格

审核: 王博斌  
主检: 陈德聪

全部合格

No. G14-WT1489

中心

共 2 页 第 1 页

生产日期: —

编号或批号: —

样品编号: —

检测类别: 委托检测

样品数量: 2件

检测日期: 2018年04月24日

检测人: 李彦平

0046标准的要素:

二〇一八年四月二十四日

佛山市质量监测检测中心“诚信服务”承诺

主检: 陈德聪



Q: What is your company's main product? A: We are a professional manufacturer of various types of shoes, including men's, women's, and children's shoes. We have a rich experience in shoe production and a complete production line.

Q: Do you have any certifications? A: Yes, we have ISO9001 and BSCI certifications.

Q: How long has your company been in business? A: Our company has been in business for over 10 years.

Q: What is your company's production capacity? A: Our company has a production capacity of 100,000 pairs of shoes per month.

Q: How do you ensure the quality of your products? A: We have a strict quality control system and a professional quality control team. We ensure that every pair of shoes meets our high standards for quality and durability.

Q: What is your company's payment method? A: We accept T/T, L/C, and Western Union.

Q: What is your company's lead time? A: Our lead time is 7-10 days.

Q: How do you handle customer complaints? A: We have a professional customer service team that will handle all customer complaints and provide a satisfactory solution.

Q: What is your company's FOB? A: Our FOB is FOB Shanghai.