

Product show

□□□□ □□□□ □ □□□□□
□□□□ □□ □□□□ 10 □ □□□□□□ □□□
□□□□□ □□□□□ □ □□□□□
□ □"□ 2.2 □ □"□ 2.0 ,□"□ 1.8 □ □□□□□
□"□ 3.0 ,□"□ 2.8 ,□"□ 2.5
□"□ 1130 □ □□□□ □□□□□
□"□ 1000/1050 □ □□□□ □□□□□
□"□ 660 □ □□□□□□ □□□□□□
□□□□□ 3 □ □□□□□□
□□□ □□□□/□□□□□□ □ □□□□ □□□□



Carrying capacity



Flame retardant



Not Conduct Electricity



Corrosion Resistance



White



Green



Blue



Yellow

More Types

1130 corrugaetd sheets



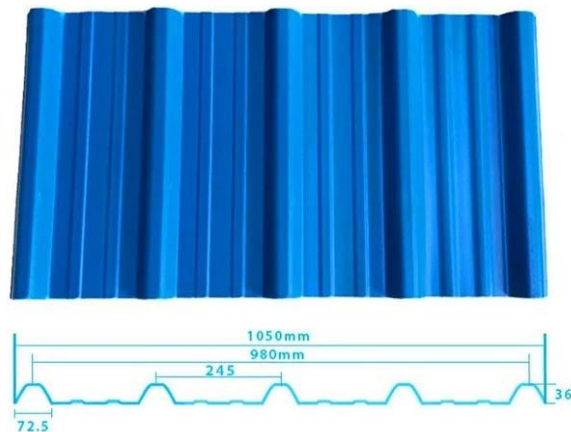
1130 trapezoidal sheets



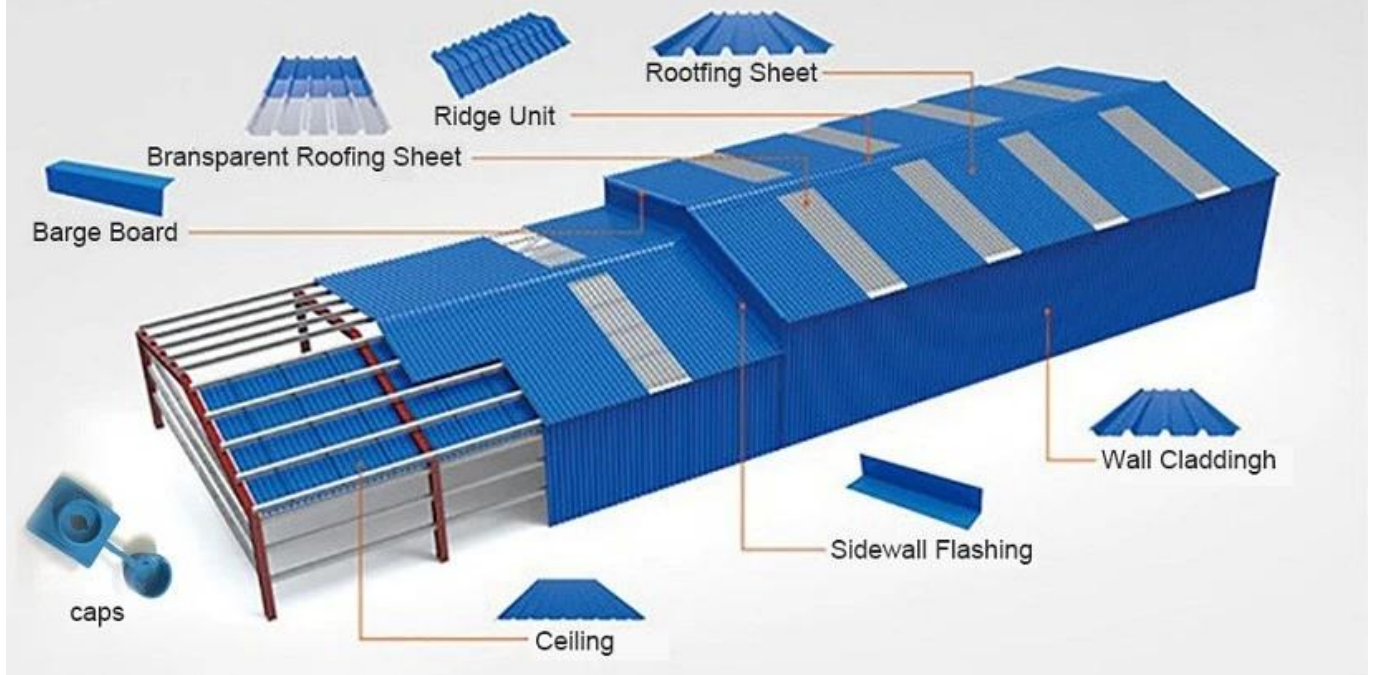
900 high wave



980 high wave



PVC accessories

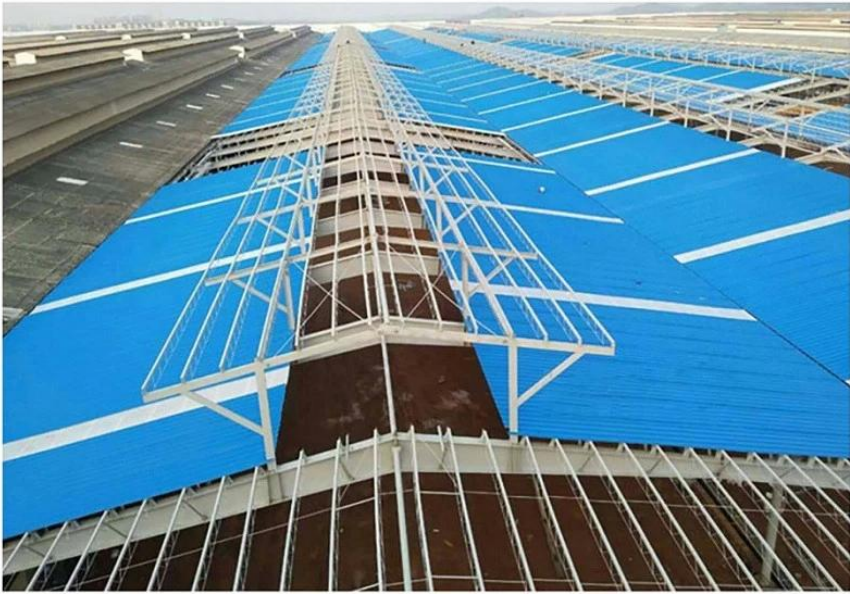


ZXC New Material Technology Co., 專業生產 PVC, ASA, FRP, UPVC 等各種 PVC 產品。本公司產品採用優質 PVC 原料，經科學配方及先進設備生產而成，具有優良的耐老化、耐腐蝕、抗污、抗裂等性能。廣泛用於建築、交通、市政、工業、農業等領域。歡迎各界人士垂詢洽購。

Our Factory



Engineering case



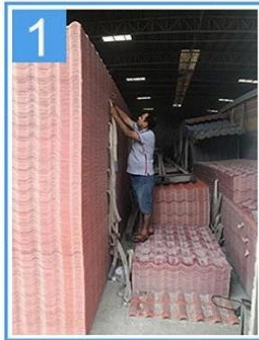
Certificate



Exhibition



Packaging



FAQ

*? **Q1: How long is the lead time?**

A: The lead time is 15-20 days for standard products, and 25-30 days for customized products. We will provide you with a detailed lead time schedule after you place an order.

? **Q2: Can you provide OEM/ODM services?**

A: Yes, we can provide OEM/ODM services. We have a professional R&D team and can provide you with customized products according to your requirements.

? **Q3: What is your payment method?**

A: We accept T/T, L/C, and Western Union. For new customers, we usually require a 30% deposit in advance.

? **Q4: How do you ensure product quality?**

A: We have a strict quality control system. All products are inspected before shipment to ensure that they meet the required standards.

*? **Q5: How do you handle product defects?**

A: We will provide a full refund or replacement for defective products. We will also investigate the cause of the defect to prevent it from recurring.

*? **Q6: How do you handle product returns?**

A: We accept returns for defective products. The return process is simple and fast. We will provide you with a detailed return policy.

*? **Q7: How do you handle shipping?**

A: We offer various shipping methods, including air, sea, and land. We will provide you with a detailed shipping schedule and cost estimate. For example, T/T 30% is required in advance. For FOB, we will provide you with a detailed shipping policy.