

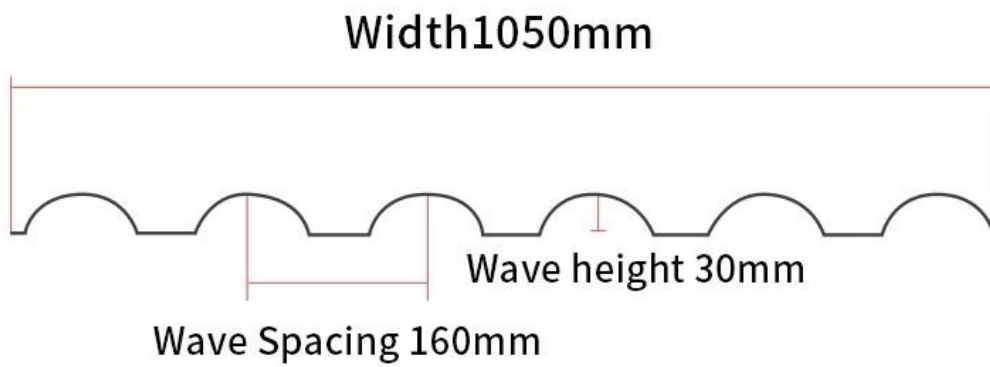


# Resin tile dormer modeling design



产品名称	树脂瓦 树脂瓦
型号	ZXC
规格	(树脂瓦 树脂瓦) 树脂瓦 树脂瓦 树脂瓦 树脂瓦 树脂瓦
重量	25 公斤
标准	ISO9001 / SGS / CE
包装	1x20GP 1 个 6 个 6x40GP 7 个
长度	219 厘米
宽度	1050 厘米
厚度	960 厘米
颜色	2.3 厘米 3.0 / 厘米 2.8 / 厘米 2.5 / 厘米
材料	树脂瓦 树脂瓦 树脂瓦 树脂瓦
数量	160 个

**انقر [الموردين بلاط السقف الراتنج الاصطناعية](#) لتعلم المزيد**



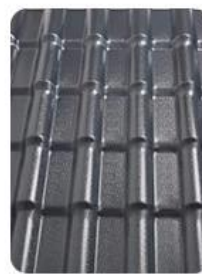
Brick red



Purplished red



Dark green



Gray



Blue

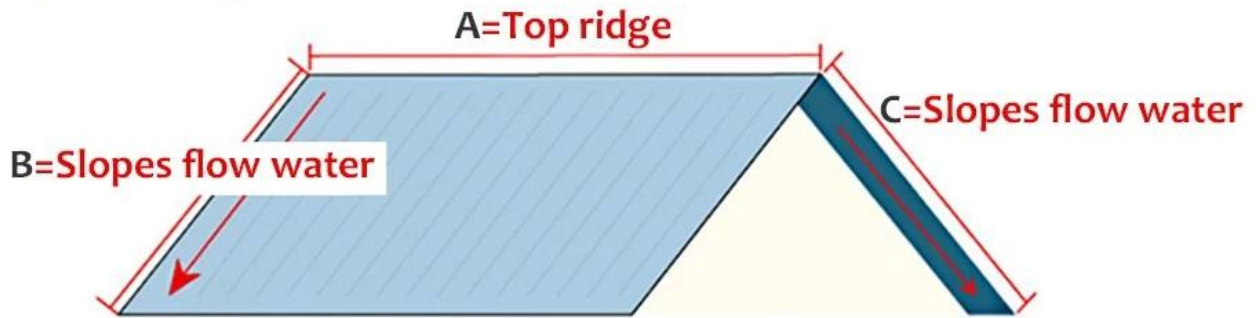
## **Application**

- 1: It has long-lasting color
- 2: light weight,
- 3: self-waterproof,
- 4: tough, thermal insulation,
- 5: sound insulation
- 6: corrosion resistance
- 7: wind and shock resistance
- 8: hail resistance, and stain resistance
- 9: .Green environmental protection
- 10: fire prevention, insulation
- 11: easy installation



# Dimensional measurement method

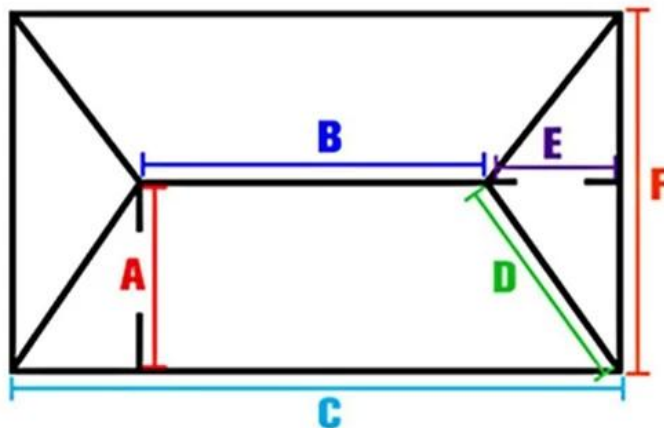
**both sides**



1. Measure the dimension of the **A** top ridge.
2. Measure the dimensions of **B**
3. Measure the dimensions of **C**

Measure all the dimensions (don't forget the eaves)

**four sides**



1. Measure the dimension of the **B** top ridge.
2. Measure the dimensions of ramp **A**
3. Measure the width of **C**
4. Measure the dimensions of the **D** diagonal ridge.
5. Measure the dimensions of ramp **E**
6. Measure the width of **F**

Measure all the dimensions (don't forget the eaves)



# Project show pictures

Guangxi bungalow renovation



Qingyuan Scenic Area



Foshan residential roof



Renovation of old houses in Guangzhou





# Product comparison

We're not afraid of contrast. Quality is the last word.

Zhongxingsheng



General manufacturers



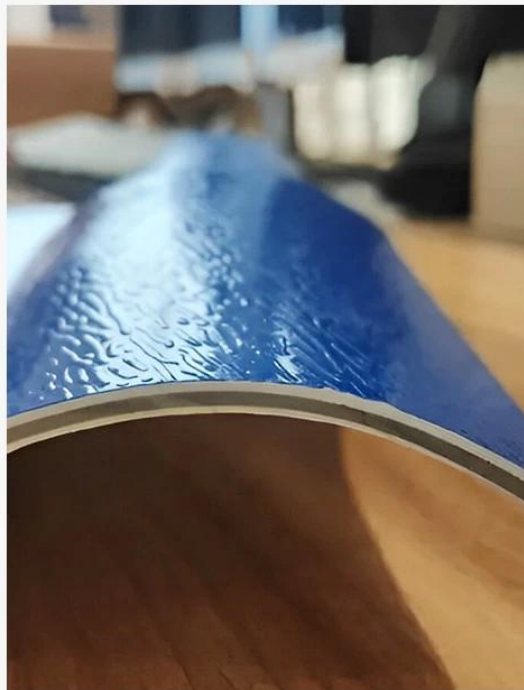
Long-lasting color, durable



Inferior resin tiles are easy to fade



Only three layers of brand new material are produced.



Four layers are compressed and mostly recycled material



# Our Factory

佛山市众兴晟新材料科技有限公司  
Foshan Zhongxingcheng New Material Co., Ltd. 佛山市南海 District China  
ASA 板材 APVC 板材 PVC 板材 FRP 板材 PC 板材





Factory display



9 production lines



Raw material warehouse



# Exhibition





# Certificate

# Official quality inspection, quality assurance

In line with the national roofing building materials standard.





# Packaging



# FAQ

\* 2022년 10월 10일 기준  
 이 문서는 2022년 10월 10일 기준으로 작성되었습니다. 2022년 10월 10일 이후에 변경된 사항에 대해서는 별도 공지사항을 통해 안내될 수 있습니다. \*  
 .2022년 10월 10일 기준으로 작성되었습니다. 2022년 10월 10일 이후에 변경된 사항에 대해서는 별도 공지사항을 통해 안내될 수 있습니다.

본 문서는 2022년 10월 10일 기준으로 작성되었습니다. \*  
 2022년 10월 10일 기준으로 작성되었습니다. \*  
 2022년 10월 10일 기준으로 작성되었습니다. \*

