

[China synthetic resin roof tile factory](#)--Synthetic resin impact weather board







Zhongxingcheng New Material Co., Ltd. is located in Foshan City, Nanhai District China is a manufacturer specializing in the production of ASA synthetic resin tile, APVC anti-corrosion composite tile, PVC anti-corrosion tile, PVC sink, PVC plate, Transparent FRP Roof Sheet, PVC, PC transparent tile.

ABOUT US



QUALITY, INNOVATION, STRUGGLE, WIN-WIN

we have 8 production lines, about 100 employees, covering an area of 15,000 square meters.



PRODUCTION PROCESS



Raw Materials

1



Extrusion

2



Compression Molding

3



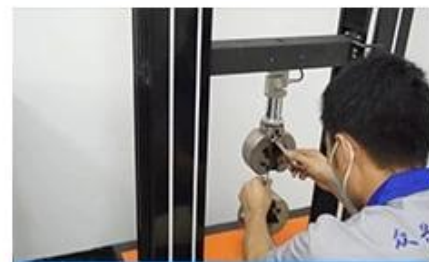
Cutting

4



Finished Product

5



Inspection

6

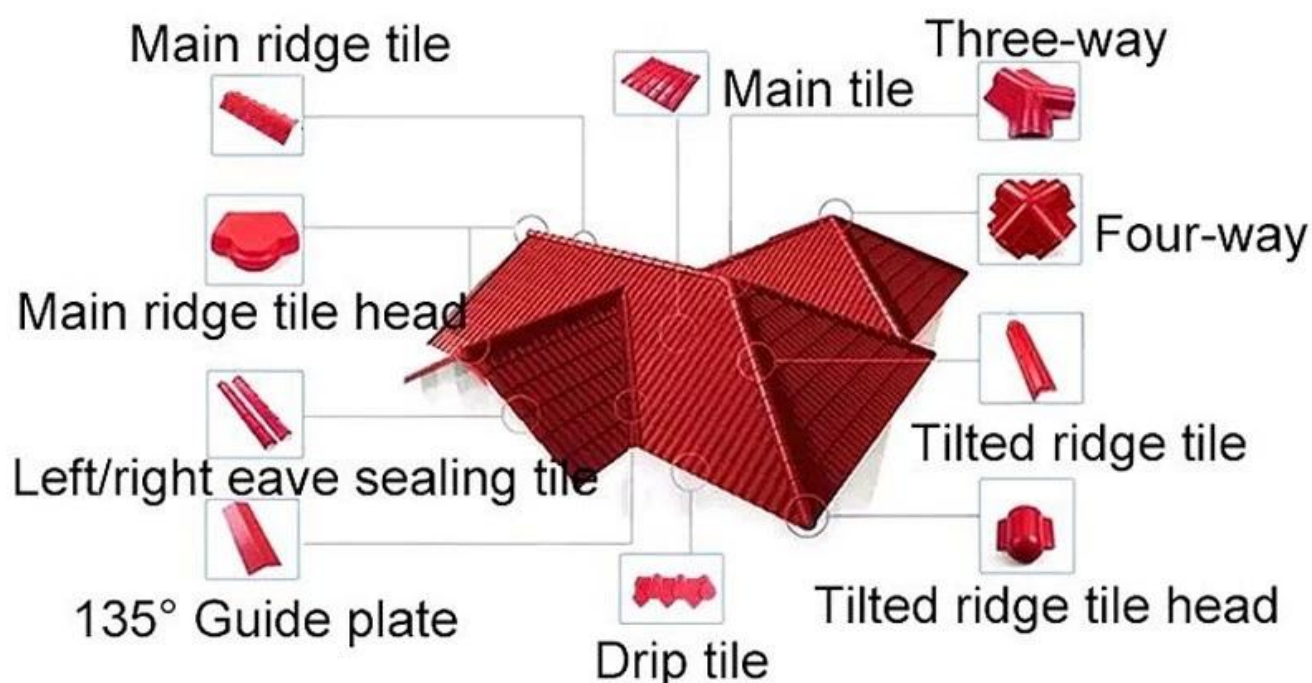
CERTIFICATE

ZHONGXINGCHENG

has more than 10 years experience in roof tile.



resin roof tile accessories



▶ Step1



▶ Step2



▶ Step3



▶ Step4



▶ Step5

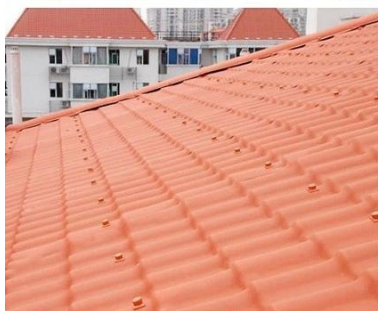


▶ Step6

Our Factory



Engineering case



Certificate



Packaging



Feature:

1. Excellent Anti-corrosion Performance
2. Good Waterproof Performance
3. Fire Resistance
4. Heat insulation
5. Sound insulation
6. Weather fastness, ageing resistance

Package: Nude or standard export package



FAQ

***Are you manufacturer or trader?**

*Yes, we are real , there are many pictures in our company introduction .if you need other special product, we will do our best to help you, so we can build a long-term business relationship.

***Can I order the product with i want to profile?**

*Of course you can, also we will produce the products according to your detail requests.

***Can you put my company's brand on your products?**

*Yes,we are accept OEM&ODM service.But we need some information about your company.

***How to install the roofing sheet?**

*Please contact our service staff, we have installation video for you.

***Can you provide samples for me to open the market and test quality?**

*Yes,we can.We can provide free samples to you ,Could you pay the shipping cost?Please contact our service staff.

***What is your trade term?**

* Payment: T/T 30% in advance, balance before shipment.

? Production Lead Time: Within 7 working days after 30% deposit

? FOB Shipping Port: Foshan,Guangzhou,Shenzhen