

## Product show

ZXC ([oem corrugated roofing sheets china](#)) provide customization service. Our products the main raw material is PVC with ultraviolet resistant agent and additives. Through scientific compounding, made with advanced technology.

- 1.Light weight
- 2.Environmental protection
- 3.waterproof and fireproof
- 4.Easy-installation
- 5.Anti-corrosion
- 6.Good sound insulation



zxc roofing tile industry

# After sales less is really good

Ten years of slow fading, **30** years of warranty



## GOOD CHOICE

Our advantage



Intimate service,  
strong product  
supply capacity



product  
available



A variety of  
styles and  
specifications  
sufficient stock



Support  
customization



Specifications and sizes  
can be consulted with  
customer service in  
detail, and quotations  
can be customized



Worry-free  
after sales



Manufacturers  
wholesale quality  
assurance, affordable  
prices, worry-free  
after-sales

<b>Length</b>	1m-12m
<b>Surface</b>	Matt
<b>Weight</b>	3.0-6.8kg/m
<b>Width</b>	1130mm/ 1080mm/ 1050mm/ 980mm/ 930mm
<b>Warranty</b>	30Years
<b>Model Number</b>	ASA PVC Composite Sheet
<b>Function</b>	Insulation, Flame Retardant, Heat Insulation, Anti-corrosion, Impact Resistance
<b>Shape</b>	round wave, big round wave, trepezoidal wave
<b>Fire Protection Rating</b>	B1
<b>Temperature</b>	—10 Degrees Celsius to 70 Degrees Celsius
<b>Color</b>	White, Blue, Gray, Red, customizable
<b>Layers</b>	2 or 3 layers
<b>Color Lasting</b>	10 Years no Fading

Click [pvc roofing sheet wholesales china](#) to learn more

# SOURCE MANUFACTURER #

---

>



# THE TROUBLES OF TRADITIONAL ROOF TILES

#

other products

×



**severely faded**

Wind and sun soften and fade



**There is a gap**

Uneven with gaps, leaking rain



**uneven color**

Weathered uneven color  
phenomenon

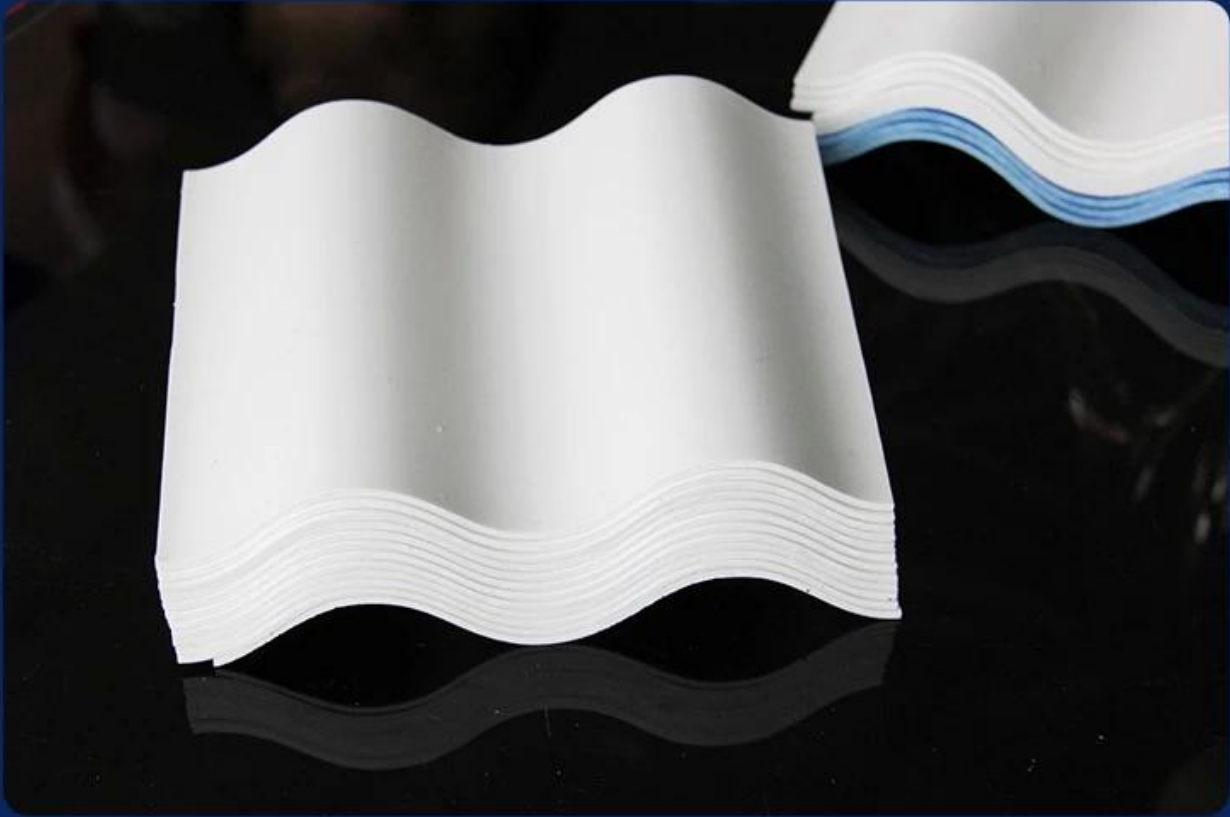


**Fragile**

Fragile and complicated  
to install

## **our products** ✓

Ten years of slow fading, 30 years of warranty



**Uniform color, durable and not easy to fade**  
Good quality, durable and bright.

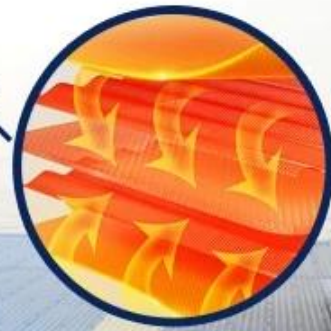


high toughness



Strong pressure resistance

Effective insulation



good sound insulation



**thermal and acoustic insulation high-quality**  
Good sound insulation effect in case of external noise



**preservative**  
Anti-acid and alkali



**flame retardant performance**  
b1 class fire performance

# PRODUCT PARAMETERS

---

#

>



<b>thickness:</b> 1.0mm-3.0mm
<b>width:</b> 1130/980/900/840/1080mm
<b>length:</b> customizable
<b>waveform:</b> big hang, small wave
<b>type:</b> asa plastic roofing tile
<b>Be applicable:</b> Factory buildings, ware houses, markets, residences, market roads, canopies, chemically corrosivefactories

# A variety of colors, optional to build different architectural styles

More colors can be customized



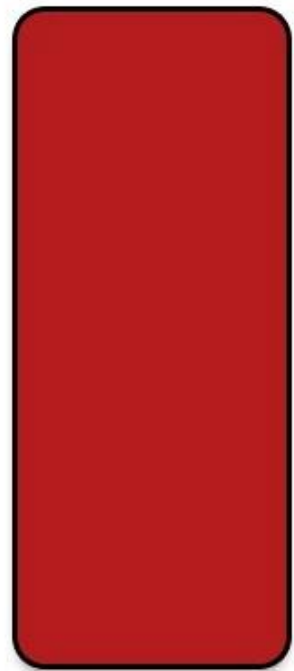
<Mlight yellow>



<dark blue>

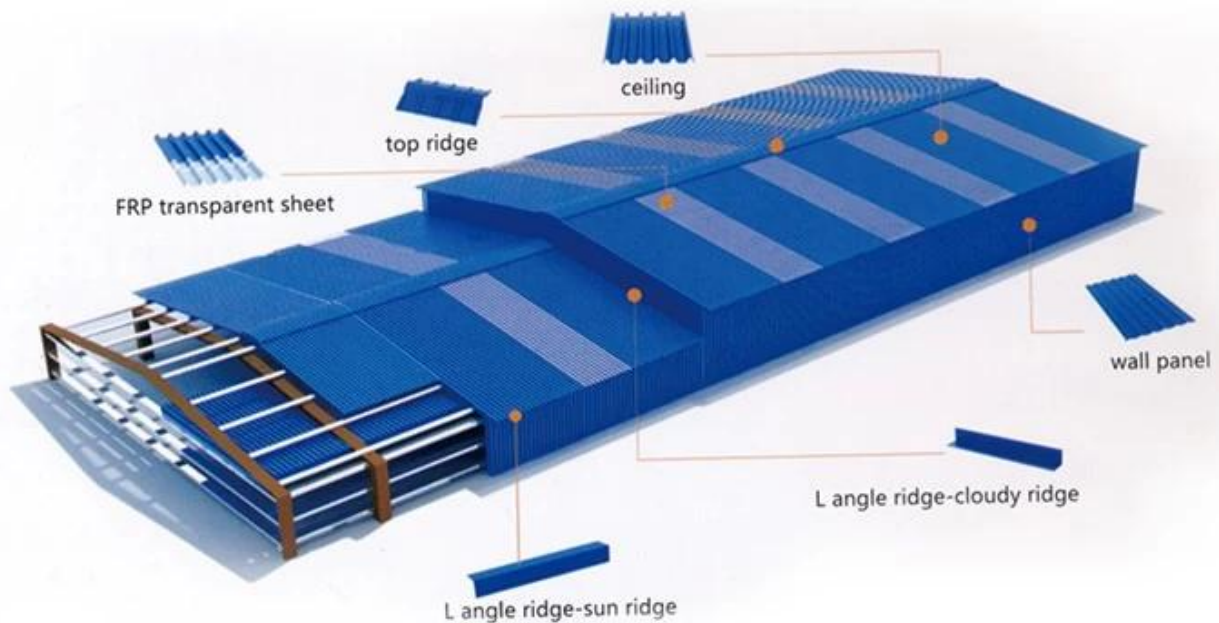


<grass green>



<Beige>

# Accessories and Installation Diagram

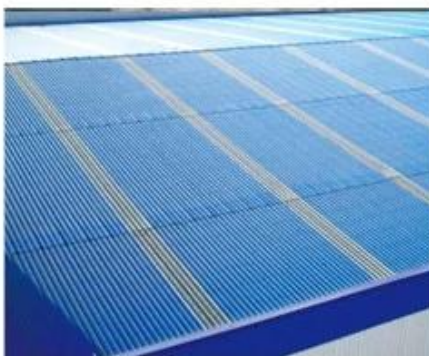


\*pvc plastic waterproof cap, used with self-tapping screws to fix the tile on the skeleton



# CUSTOMER CASE SHOW #





Our Factory

Zhongxingcheng New Material Co., Ltd. is located in Foshan City, Nanhai District China is a manufacturer specializing in the production of ASA synthetic resin tile, APVC anti-corrosion composite tile, PVC anti-corrosion tile, PVC sink, PVC plate, Transparent FRP Roof Sheet, PVC, PC transparent tile.



## Quality inspection instruments strictly control the quality

Each batch of products has undergone rigorous testing.



Gravity testing



Hardness testing



Tensile force testing



Impact resistance testing

Factory display



In-stock inventory



Own production line



Own production line



# Exhibition



# Certificate

# Official quality inspection, quality assurance

Multiple quality inspection and testing  
to ensure good quality.



IOS9000 certified



China Metrology Certification



CAL certification



佛山市质量监督检测中心  
检验报告

报告号: QB-049-02  
样品号: G14-WT1489

序号	检测项目	单位	标准要求	检测结果	判定
1	外观	—	表面光滑平整, 厚度均匀, 色泽一致, 无裂纹、缺口、破孔、翘曲、气泡、杂质、斑点、变色点	符合	合格
2	密度	g/cm <sup>3</sup>	1.45~1.65	1.64	合格
3	弯曲性能	mm	支撑跨度100mm, 载荷40kg, 允许挠度≤50	15	合格
4	冲击性能	—	1kg重钢球, 1.5m, 自由落体, 冲击试样无裂纹, 试样经冲击试验后不得产生贯穿的孔穴或裂纹	符合	合格
5	氧指数	%	≥40	43	合格

审核: 王博斌  
主检: 陈德强

**全部合格**

佛山市质  
Foshan Supervision

## Packaging



## FAQ

**\*Are you manufacturer or trader?**

\*Yes, we are real Manufacturer, there are many pictures in our company introduction .if you need other special product, we will do our best to help you, so we can build a long-term business relationship.

**\*Can I order the product with i want to profile?**

\*Of course you can, also we will produce the products according to your detail requests.

**\*Can you put my company's brand on your products?**

\*Yes, we accept OEM&ODM service. But we need some information about your company.

**\*How to install the roofing sheet?**

\*Please contact our service staff, we have installation video for you.

**\*Can you provide samples for me to open the market and test quality?**

\*Yes, we can. We can provide free samples to you, Could you pay the shipping cost? Please contact our service staff.

**\*What is your trade term?**

\* Payment: T/T 30% in advance, balance before shipment.

- Production Lead Time: Within 7 working days after 30% deposit
- FOB Shipping Port: Foshan, Guangzhou, Shenzhen